



SGS COLOMBIA S.A.S.
CRS-F490101
ORDEN No. 4200-33938
CERTIFICADO No. CRS15121
ORDEN CERT. No. CO-CERT191201757-08
CERTIFICADO DE CONFORMIDAD DE PRODUCTO
Chint Solar (Zhejiang) Co., Ltd.
Building 1, No. 1355, Bin'an Road, Binjiang District, Hangzhou, 310052, Zhejiang, China

Certifica que el producto identificado como Paneles solares fotovoltaicos Monocristalinos, importados y/o fabricados y comercializados en Colombia por Chint Solar (Zhejiang) Co., Ltd., con referencias relacionadas en las siguientes páginas del presente documento, han sido evaluados de conformidad con:

Resolución 90708 del 30 Agosto de 2013 del Ministerio de Minas y Energía - por lo cual se expide el Reglamento Técnico de Instalaciones Eléctricas - RETIE.
 Numeral 20.22 PANELES SOLARES FOTOVOLTAICOS

Estos productos han sido sometidos a toma de muestras, inspección, ejecución de pruebas de laboratorio y evaluación del sistema de gestión de calidad del fabricante de acuerdo con el esquema de certificación 5 de la norma ISO/IEC 17067:2013.

Resultados obtenidos: CONFORME

Autorizado por:


SGS COLOMBIA S.A.S.

Camilo Ramirez
SGS Colombia S.A.S.
 Carrera 100 No. 25C-11, Bodega 3
 Bogotá D.C., Colombia

Fecha de Emisión: 2019-12-12
 Fecha de Vencimiento: 2022-12-12
 Versión 7; 2021-12-16

Página 1 de 46



This document cancels and supersedes the last version of this certificate number issued by SGS Colombia S.A.S.



Any complaint, appeal or enquiry about the validity of this certificate/report may be sent to co.service@sgs.com, via phone No. 7422274 ext. 13602 and its validity can be checked at <https://www.sgs.com/en/certified-clients-and-products>

This document is issued by the Company under its General Conditions of Service accessible at <http://www.sgs.com/terms-and-conditions.html>. Attention is drawn to the limitation of liability, indemnification and jurisdiction issues defined therein.

Any holder of this document is advised that information contained herein reflects the Company's findings at the time of its intervention only and within the limits of Client's instructions, if any. The Company's sole responsibility is to its Client and this document does not exonerate parties to a transaction from exercising all their rights and obligations under the transaction documents. Any unauthorized alteration, forgery or falsification of the content or appearance of this document is unlawful and offenders may be prosecuted to the fullest extent of the law.



SGS COLOMBIA S.A.S.

CRS-F490101

ORDEN No. 4200-33938

CERTIFICADO No. CRS15121

ORDEN CERT. No. CO-CERT191201757-08

CERTIFICADO DE CONFORMIDAD DE PRODUCTO

Chint Solar (Zhejiang) Co., Ltd.

Building 1, No. 1355, Bin'an Road, Binjiang District, Hangzhou, 310052, Zhejiang, China

Paneles solares fotovoltaicos Monocristalinos

Fabricadas por Chint New Energy Technology (Haining) Co., Ltd.

No.1, Jisheng Road, Jianshan New District, Haining, 314415, Zhejiang, China

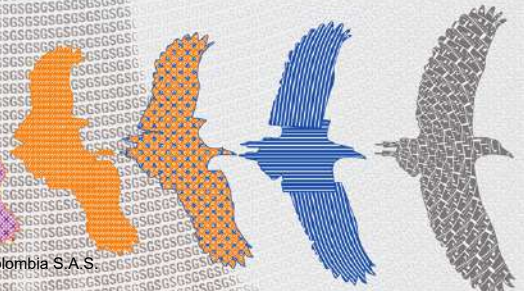
Referencia	Tipo	Tensión Máxima Del Sistema (V)	Tensión En Circuito Abierto (V)	Corriente Nominal (A)	Corriente De Cortocircuito (A)	Potencia Máxima Del Módulo (W)	Estándar De Ensayo
CHSM72M(DG)-B-345	Mono	1500	47.05	20	9.53	345	IEC61215-1:2016 IEC61215-2:2016
CHSM72M(DG)-B-350	Mono	1500	47.25	20	9.6	350	IEC61215-1:2016 IEC61215-2:2016
CHSM72M(DG)-B-355	Mono	1500	47.45	20	9.67	355	IEC61215-1:2016 IEC61215-2:2016
CHSM72M(DG)-B-360	Mono	1500	47.65	20	9.74	360	IEC61215-1:2016 IEC61215-2:2016
CHSM72M(DG)-B-365	Mono	1500	47.85	20	9.81	365	IEC61215-1:2016 IEC61215-2:2016
CHSM72M(DG)-B-370	Mono	1500	48.05	20	9.88	370	IEC61215-1:2016 IEC61215-2:2016
CHSM72M(DG)-B-375	Mono	1500	48.24	20	9.95	375	IEC61215-1:2016 IEC61215-2:2016
CHSM72M(DG)-B-380	Mono	1500	48.43	20	10.03	380	IEC61215-1:2016 IEC61215-2:2016
CHSM72M(DG)-B-385	Mono	1500	48.62	20	10.11	385	IEC61215-1:2016 IEC61215-2:2016
CHSM72M(DG)-B-390	Mono	1500	48.81	20	10.19	390	IEC61215-1:2016 IEC61215-2:2016
CHSM72M(DG)-B-395	Mono	1500	49.00	20	10.27	395	IEC61215-1:2016 IEC61215-2:2016
CHSM72M(DG)-B-400	Mono	1500	49.19	20	10.35	400	IEC61215-1:2016 IEC61215-2:2016
CHSM72M(DG)/F-B-345	Mono	1500	47.05	20	9.53	345	IEC61215-1:2016 IEC61215-2:2016
CHSM72M(DG)/F-B-350	Mono	1500	47.25	20	9.60	350	IEC61215-1:2016 IEC61215-2:2016

Fecha de Emisión: 2019-12-12

Fecha de Vencimiento: 2022-12-12

Versión 7; 2021-12-16

Página 2 de 46



This document cancels and supersedes the last version of this certificate number issued by SGS Colombia S.A.S.

Any complaint, appeal or enquiry about the validity of this certificate/report may be sent to so.servicioalcliente@sgs.com, via phone No. 7422274 ext. 13602 and its validity can be checked at <https://www.sgs.com/en/certified-clients-and-products>

This document is issued by the Company under its General Conditions of Service accessible at <http://www.sgs.com/terms-and-conditions.htm>. Attention is drawn to the limitation of liability, indemnification and jurisdiction issues defined therein.

Any holder of this document is advised that information contained herein reflects the Company's findings at the time of its intervention only and within the limits of Client's instructions, if any. The Company's sole responsibility is to its Client and this document does not exonerate parties to a transaction from exercising all their rights and obligations under the transaction documents. Any unauthorized alteration, forgery or falsification of the content or appearance of this document is unlawful and offenders may be prosecuted to the fullest extent of the law.

CRS-C-06-05 V.4 junio 2019





SGS COLOMBIA S.A.S.
CRS-F490101
ORDEN No. 4200-33938
CERTIFICADO No. CRS15121
ORDEN CERT. No. CO-CERT191201757-08
CERTIFICADO DE CONFORMIDAD DE PRODUCTO
Chint Solar (Zhejiang) Co., Ltd.
Building 1, No. 1355, Bin'an Road, Binjiang District, Hangzhou, 310052, Zhejiang, China

Referencia	Tipo	Tensión Máxima Del Sistema (V)	Tensión En Circuito Abierto (V)	Corriente Nominal (A)	Corriente De Cortocircuito (A)	Potencia Máxima Del Módulo (W)	Estándar De Ensayo
CHSM72M(DG)/F-B-355	Mono	1500	47,45	20	9,67	355	IEC61215-1:2016 IEC61215-2:2016
CHSM72M(DG)/F-B-360	Mono	1500	47,65	20	9,74	360	IEC61215-1:2016 IEC61215-2:2016
CHSM72M(DG)/F-B-365	Mono	1500	47,85	20	9,81	365	IEC61215-1:2016 IEC61215-2:2016
CHSM72M(DG)/F-B-370	Mono	1500	48,05	20	9,88	370	IEC61215-1:2016 IEC61215-2:2016
CHSM72M(DG)/F-B-375	Mono	1500	48,24	20	9,95	375	IEC61215-1:2016 IEC61215-2:2016
CHSM72M(DG)/F-B-380	Mono	1500	48,43	20	10,03	380	IEC61215-1:2016 IEC61215-2:2016
CHSM72M(DG)/F-B-385	Mono	1500	48,62	20	10,11	385	IEC61215-1:2016 IEC61215-2:2016
CHSM72M(DG)/F-B-390	Mono	1500	48,81	20	10,19	390	IEC61215-1:2016 IEC61215-2:2016
CHSM72M(DG)/F-B-395	Mono	1500	49,00	20	10,27	395	IEC61215-1:2016 IEC61215-2:2016
CHSM72M(DG)/F-B-400	Mono	1500	49,19	20	10,35	400	IEC61215-1:2016 IEC61215-2:2016
CHSM60M(DG)-B-285	Mono	1500	39,27	20	9,35	285	IEC61215-1:2016 IEC61215-2:2016
CHSM60M(DG)-B-290	Mono	1500	39,47	20	9,43	290	IEC61215-1:2016 IEC61215-2:2016
CHSM60M(DG)-B-295	Mono	1500	39,67	20	9,51	295	IEC61215-1:2016 IEC61215-2:2016
CHSM60M(DG)-B-300	Mono	1500	39,87	20	9,59	300	IEC61215-1:2016 IEC61215-2:2016
CHSM60M(DG)-B-305	Mono	1500	40,07	20	9,67	305	IEC61215-1:2016 IEC61215-2:2016
CHSM60M(DG)-B-310	Mono	1500	40,27	20	9,75	310	IEC61215-1:2016 IEC61215-2:2016

Fecha de Emisión: 2019-12-12
 Fecha de Vencimiento: 2022-12-12
 Versión 7; 2021-12-16

Página 3 de 46



This document cancels and supersedes the last version of this certificate number issued by SGS Colombia S.A.S.

Any complaint, appeal or enquiry about the validity of this certificate/report may be sent to so.servicioalcliente@sgs.com, via phone No. 7422274 ext. 13602 and its validity can be checked at <https://www.sgs.com/en/certified-clients-and-products>

This document is issued by the Company under its General Conditions of Service accessible at <http://www.sgs.com/terms-and-conditions.html>. Attention is drawn to the limitation of liability, indemnification and jurisdiction issues defined therein.

Any holder of this document is advised that information contained herein reflects the Company's findings at the time of its intervention only and within the limits of Client's instructions, if any. The Company's sole responsibility is to its Client and this document does not exonerate parties to a transaction from exercising all their rights and obligations under the transaction documents. Any unauthorized alteration, forgery or falsification of the content or appearance of this document is unlawful and offenders may be prosecuted to the fullest extent of the law.

CRS-C-06-05 V.4 junio 2019





SGS COLOMBIA S.A.S.
CRS-F490101
ORDEN No. 4200-33938
CERTIFICADO No. CRS15121
ORDEN CERT. No. CO-CERT191201757-08
CERTIFICADO DE CONFORMIDAD DE PRODUCTO
Chint Solar (Zhejiang) Co., Ltd.
Building 1, No. 1355, Bin'an Road, Binjiang District, Hangzhou, 310052, Zhejiang, China

Referencia	Tipo	Tensión Máxima Del Sistema (V)	Tensión En Circuito Abierto (V)	Corriente Nominal (A)	Corriente De Cortocircuito (A)	Potencia Máxima Del Módulo (W)	Estándar De Ensayo
CHSM60M(DG)-B-315	Mono	1500	40.46	20	9.83	315	IEC61215-1:2016 IEC61215-2:2016
CHSM60M(DG)-B-320	Mono	1500	40.65	20	9.91	320	IEC61215-1:2016 IEC61215-2:2016
CHSM60M(DG)-B-325	Mono	1500	40.84	20	9.99	325	IEC61215-1:2016 IEC61215-2:2016
CHSM60M(DG)-B-330	Mono	1500	41.03	20	10.07	330	IEC61215-1:2016 IEC61215-2:2016
CHSM60M(DG)/F-B-285	Mono	1500	39.27	20	9.35	285	IEC61215-1:2016 IEC61215-2:2016
CHSM60M(DG)/F-B-290	Mono	1500	39.47	20	9.43	290	IEC61215-1:2016 IEC61215-2:2016
CHSM60M(DG)/F-B-295	Mono	1500	39.67	20	9.51	295	IEC61215-1:2016 IEC61215-2:2016
CHSM60M(DG)/F-B-300	Mono	1500	39.87	20	9.59	300	IEC61215-1:2016 IEC61215-2:2016
CHSM60M(DG)/F-B-305	Mono	1500	40.07	20	9.67	305	IEC61215-1:2016 IEC61215-2:2016
CHSM60M(DG)/F-B-310	Mono	1500	40.27	20	9.75	310	IEC61215-1:2016 IEC61215-2:2016
CHSM60M(DG)/F-B-315	Mono	1500	40.46	20	9.83	315	IEC61215-1:2016 IEC61215-2:2016
CHSM60M(DG)/F-B-320	Mono	1500	40.65	20	9.91	320	IEC61215-1:2016 IEC61215-2:2016
CHSM60M(DG)/F-B-325	Mono	1500	40.84	20	9.99	325	IEC61215-1:2016 IEC61215-2:2016
CHSM60M(DG)/F-B-330	Mono	1500	41.03	20	10.07	330	IEC61215-1:2016 IEC61215-2:2016
CHSM72M(DGT)-B-340	Mono	1500	47.36	20	9.34	340	IEC61215-1:2016 IEC61215-2:2016
CHSM72M(DGT)-B-345	Mono	1500	47.56	20	9.41	345	IEC61215-1:2016 IEC61215-2:2016

Fecha de Emisión: 2019-12-12
 Fecha de Vencimiento: 2022-12-12
 Versión 7; 2021-12-16

Página 4 de 46



This document cancels and supersedes the last version of this certificate number issued by SGS Colombia S.A.S.



Any complaint, appeal or enquiry about the validity of this certificate/report may be sent to so.servicioalcliente@sgs.com, via phone No. 7422274 ext. 13602 and its validity can be checked at <https://www.sgs.com/en/certified-clients-and-products>

This document is issued by the Company under its General Conditions of Service accessible at <http://www.sgs.com/terms-and-conditions.htm>. Attention is drawn to the limitation of liability, indemnification and jurisdiction issues defined therein.

Any holder of this document is advised that information contained herein reflects the Company's findings at the time of its intervention only and within the limits of Client's instructions, if any. The Company's sole responsibility is to its Client and this document does not exonerate parties to a transaction from exercising all their rights and obligations under the transaction documents. Any unauthorized alteration, forgery or falsification of the content or appearance of this document is unlawful and offenders may be prosecuted to the fullest extent of the law.



SGS COLOMBIA S.A.S.
CRS-F490101
ORDEN No. 4200-33938
CERTIFICADO No. CRS15121
ORDEN CERT. No. CO-CERT191201757-08
CERTIFICADO DE CONFORMIDAD DE PRODUCTO
Chint Solar (Zhejiang) Co., Ltd.
Building 1, No. 1355, Bin'an Road, Binjiang District, Hangzhou, 310052, Zhejiang, China

Referencia	Tipo	Tensión Máxima Del Sistema (V)	Tensión En Circuito Abierto (V)	Corriente Nominal (A)	Corriente De Cortocircuito (A)	Potencia Máxima Del Módulo (W)	Estándar De Ensayo
CHSM72M(DGT)-B-350	Mono	1500	47,76	20	9,48	350	IEC61215-1:2016 IEC61215-2:2016
CHSM72M(DGT)-B-355	Mono	1500	47,96	20	9,55	355	IEC61215-1:2016 IEC61215-2:2016
CHSM72M(DGT)-B-360	Mono	1500	48,16	20	9,62	360	IEC61215-1:2016 IEC61215-2:2016
CHSM72M(DGT)-B-365	Mono	1500	48,36	20	9,69	365	IEC61215-1:2016 IEC61215-2:2016
CHSM72M(DGT)-B-370	Mono	1500	48,56	20	9,76	370	IEC61215-1:2016 IEC61215-2:2016
CHSM72M(DGT)/F-B-340	Mono	1500	47,36	20	9,34	340	IEC61215-1:2016 IEC61215-2:2016
CHSM72M(DGT)/F-B-345	Mono	1500	47,56	20	9,41	345	IEC61215-1:2016 IEC61215-2:2016
CHSM72M(DGT)/F-B-350	Mono	1500	47,76	20	9,48	350	IEC61215-1:2016 IEC61215-2:2016
CHSM72M(DGT)/F-B-355	Mono	1500	47,96	20	9,55	355	IEC61215-1:2016 IEC61215-2:2016
CHSM72M(DGT)/F-B-360	Mono	1500	48,16	20	9,62	360	IEC61215-1:2016 IEC61215-2:2016
CHSM72M(DGT)/F-B-365	Mono	1500	48,36	20	9,69	365	IEC61215-1:2016 IEC61215-2:2016
CHSM72M(DGT)/F-B-370	Mono	1500	48,56	20	9,76	370	IEC61215-1:2016 IEC61215-2:2016
CHSM60M(DGT)-B-280	Mono	1500	39,28	20	9,20	280	IEC61215-1:2016 IEC61215-2:2016
CHSM60M(DGT)-B-285	Mono	1500	39,48	20	9,28	285	IEC61215-1:2016 IEC61215-2:2016
CHSM60M(DGT)-B-290	Mono	1500	39,68	20	9,36	290	IEC61215-1:2016 IEC61215-2:2016
CHSM60M(DGT)-B-295	Mono	1500	39,88	20	9,44	295	IEC61215-1:2016 IEC61215-2:2016

Fecha de Emisión: 2019-12-12
 Fecha de Vencimiento: 2022-12-12
 Versión 7; 2021-12-16

Página 5 de 46



This document cancels and supersedes the last version of this certificate number issued by SGS Colombia S.A.S.

Any complaint, appeal or enquiry about the validity of this certificate/report may be sent to so.servicioalcliente@sgs.com, via phone No. 7422274 ext. 13602 and its validity can be checked at <https://www.sgs.com/en/certified-clients-and-products>

This document is issued by the Company under its General Conditions of Service accessible at <http://www.sgs.com/terms-and-conditions.html>. Attention is drawn to the limitation of liability, indemnification and jurisdiction issues defined therein.

Any holder of this document is advised that information contained herein reflects the Company's findings at the time of its intervention only and within the limits of Client's instructions, if any. The Company's sole responsibility is to its Client and this document does not exonerate parties to a transaction from exercising all their rights and obligations under the transaction documents. Any unauthorized alteration, forgery or falsification of the content or appearance of this document is unlawful and offenders may be prosecuted to the fullest extent of the law.

CRS-C-06-05 V.4 junio 2019





SGS COLOMBIA S.A.S.

CRS-F490101

ORDEN No. 4200-33938

CERTIFICADO No. CRS15121

ORDEN CERT. No. CO-CERT191201757-08

CERTIFICADO DE CONFORMIDAD DE PRODUCTO

Chint Solar (Zhejiang) Co., Ltd.

Building 1, No. 1355, Bin'an Road, Binjiang District, Hangzhou, 310052, Zhejiang, China

Referencia	Tipo	Tensión Máxima Del Sistema (V)	Tensión En Circuito Abierto (V)	Corriente Nominal (A)	Corriente De Cortocircuito (A)	Potencia Máxima Del Módulo (W)	Estándar De Ensayo
CHSM60M(DGT)-B-300	Mono	1500	40.08	20	9.52	300	IEC61215-1:2016 IEC61215-2:2016
CHSM60M(DGT)-B-305	Mono	1500	40.28	20	9.60	305	IEC61215-1:2016 IEC61215-2:2016
CHSM60M(DGT)/F-B-280	Mono	1500	39.28	20	9.20	280	IEC61215-1:2016 IEC61215-2:2016
CHSM60M(DGT)/F-B-285	Mono	1500	39.48	20	9.28	285	IEC61215-1:2016 IEC61215-2:2016
CHSM60M(DGT)/F-B-290	Mono	1500	39.68	20	9.36	290	IEC61215-1:2016 IEC61215-2:2016
CHSM60M(DGT)/F-B-295	Mono	1500	39.88	20	9.44	295	IEC61215-1:2016 IEC61215-2:2016
CHSM60M(DGT)/F-B-300	Mono	1500	40.08	20	9.52	300	IEC61215-1:2016 IEC61215-2:2016
CHSM60M(DGT)/F-B-305	Mono	1500	40.28	20	9.60	305	IEC61215-1:2016 IEC61215-2:2016
CHSM72M(DG)-BH-365	Mono	1500	46.98	20	9.74	365	IEC61215-1:2016 IEC61215-2:2016
CHSM72M(DG)-BH-370	Mono	1500	47.16	20	9.82	370	IEC61215-1:2016 IEC61215-2:2016
CHSM72M(DG)-BH-375	Mono	1500	47.34	20	9.90	375	IEC61215-1:2016 IEC61215-2:2016
CHSM72M(DG)-BH-380	Mono	1500	47.52	20	9.98	380	IEC61215-1:2016 IEC61215-2:2016
CHSM72M(DG)-BH-385	Mono	1500	47.70	20	10.06	385	IEC61215-1:2016 IEC61215-2:2016
CHSM72M(DG)-BH-390	Mono	1500	47.88	20	10.14	390	IEC61215-1:2016 IEC61215-2:2016
CHSM72M(DG)-BH-395	Mono	1500	48.06	20	10.22	395	IEC61215-1:2016 IEC61215-2:2016
CHSM72M(DG)-BH-400	Mono	1500	48.24	20	10.30	400	IEC61215-1:2016 IEC61215-2:2016

Fecha de Emisión: 2019-12-12

Fecha de Vencimiento: 2022-12-12

Versión 7; 2021-12-16

Página 6 de 46



This document cancels and supersedes the last version of this certificate number issued by SGS Colombia S.A.S.

Any complaint, appeal or enquiry about the validity of this certificate/report may be sent to so.servicioalcliente@sgs.com, via phone No. 7422274 ext. 13602 and its validity can be checked at <https://www.sgs.com/en/certified-clients-and-products>

This document is issued by the Company under its General Conditions of Service accessible at <http://www.sgs.com/terms-and-conditions.html>. Attention is drawn to the limitation of liability, indemnification and jurisdiction issues defined therein.

Any holder of this document is advised that information contained herein reflects the Company's findings at the time of its intervention only and within the limits of Client's instructions, if any. The Company's sole responsibility is to its Client and this document does not exonerate parties to a transaction from exercising all their rights and obligations under the transaction documents. Any unauthorized alteration, forgery or falsification of the content or appearance of this document is unlawful and offenders may be prosecuted to the fullest extent of the law.

CRS-C-06-05 V.4 junio 2019





SGS COLOMBIA S.A.S.
CRS-F490101
ORDEN No. 4200-33938
CERTIFICADO No. CRS15121
ORDEN CERT. No. CO-CERT191201757-08
CERTIFICADO DE CONFORMIDAD DE PRODUCTO
Chint Solar (Zhejiang) Co., Ltd.
Building 1, No. 1355, Bin'an Road, Binjiang District, Hangzhou, 310052, Zhejiang, China

Referencia	Tipo	Tensión Máxima Del Sistema (V)	Tensión En Circuito Abierto (V)	Corriente Nominal (A)	Corriente De Cortocircuito (A)	Potencia Máxima Del Módulo (W)	Estándar De Ensayo
CHSM72M(DG)-BH-405	Mono	1500	48.42	20	10.38	405	IEC61215-1:2016 IEC61215-2:2016
CHSM72M(DG)-BH-410	Mono	1500	48.60	20	10.46	410	IEC61215-1:2016 IEC61215-2:2016
CHSM72M(DG)-BH-415	Mono	1500	48.78	20	10.54	415	IEC61215-1:2016 IEC61215-2:2016
CHSM72M(DG)-BH-420	Mono	1500	48.96	20	10.62	420	IEC61215-1:2016 IEC61215-2:2016
CHSM72M(DG)-BH-425	Mono	1500	48.43	20	10.97	425	IEC61215-1:2016 IEC61215-2:2016
CHSM72M(DG)-BH-430	Mono	1500	48.60	20	11.06	430	IEC61215-1:2016 IEC61215-2:2016
CHSM72M(DG)-BH-435	Mono	1500	48.90	20	11.12	435	IEC61215-1:2016 IEC61215-2:2016
CHSM72M(DG)-BH-440	Mono	1500	49.11	20	11.20	440	IEC61215-1:2016 IEC61215-2:2016
CHSM72M(DG)-BH-445	Mono	1500	49.44	20	11.25	445	IEC61215-1:2016 IEC61215-2:2016
CHSM72M(DG)-BH-450	Mono	1500	49.78	20	11.30	450	IEC61215-1:2016 IEC61215-2:2016
CHSM72M(DG)-BH-455	Mono	1500	50.07	20	11.36	455	IEC61215-1:2016 IEC61215-2:2016
CHSM72M(DG)/F-BH-365	Mono	1500	46.98	20	9.74	365	IEC61215-1:2016 IEC61215-2:2016
CHSM72M(DG)/F-BH-370	Mono	1500	47.16	20	9.82	370	IEC61215-1:2016 IEC61215-2:2016
CHSM72M(DG)/F-BH-375	Mono	1500	47.34	20	9.9	375	IEC61215-1:2016 IEC61215-2:2016
CHSM72M(DG)/F-BH-380	Mono	1500	47.52	20	9.98	380	IEC61215-1:2016 IEC61215-2:2016
CHSM72M(DG)/F-BH-385	Mono	1500	47.7	20	10.06	385	IEC61215-1:2016 IEC61215-2:2016

Fecha de Emisión: 2019-12-12
 Fecha de Vencimiento: 2022-12-12
 Versión 7; 2021-12-16

Página 7 de 46



This document cancels and supersedes the last version of this certificate number issued by SGS Colombia S.A.S.

Any complaint, appeal or enquiry about the validity of this certificate/report may be sent to so.servicioalcliente@sgs.com, via phone No. 7422274 ext. 13602 and its validity can be checked at <https://www.sgs.com/en/certified-clients-and-products>

This document is issued by the Company under its General Conditions of Service accessible at <http://www.sgs.com/terms-and-conditions.htm>. Attention is drawn to the limitation of liability, indemnification and jurisdiction issues defined therein.

Any holder of this document is advised that information contained herein reflects the Company's findings at the time of its intervention only and within the limits of Client's instructions, if any. The Company's sole responsibility is to its Client and this document does not exonerate parties to a transaction from exercising all their rights and obligations under the transaction documents. Any unauthorized alteration, forgery or falsification of the content or appearance of this document is unlawful and offenders may be prosecuted to the fullest extent of the law.

CRS-C-06-05 V.4 junio 2019





SGS COLOMBIA S.A.S.
CRS-F490101
ORDEN No. 4200-33938
CERTIFICADO No. CRS15121
ORDEN CERT. No. CO-CERT191201757-08
CERTIFICADO DE CONFORMIDAD DE PRODUCTO
Chint Solar (Zhejiang) Co., Ltd.
Building 1, No. 1355, Bin'an Road, Binjiang District, Hangzhou, 310052, Zhejiang, China

Referencia	Tipo	Tensión Máxima Del Sistema (V)	Tensión En Circuito Abierto (V)	Corriente Nominal (A)	Corriente De Cortocircuito (A)	Potencia Máxima Del Módulo (W)	Estándar De Ensayo
CHSM72M(DG)/F-BH-390	Mono	1500	47,88	20	10,14	390	IEC61215-1:2016 IEC61215-2:2016
CHSM72M(DG)/F-BH-395	Mono	1500	48,06	20	10,22	395	IEC61215-1:2016 IEC61215-2:2016
CHSM72M(DG)/F-BH-400	Mono	1500	48,24	20	10,3	400	IEC61215-1:2016 IEC61215-2:2016
CHSM72M(DG)/F-BH-405	Mono	1500	48,42	20	10,38	405	IEC61215-1:2016 IEC61215-2:2016
CHSM72M(DG)/F-BH-410	Mono	1500	48,6	20	10,46	410	IEC61215-1:2016 IEC61215-2:2016
CHSM72M(DG)/F-BH-415	Mono	1500	48,78	20	10,54	415	IEC61215-1:2016 IEC61215-2:2016
CHSM72M(DG)/F-BH-420	Mono	1500	48,96	20	10,62	420	IEC61215-1:2016 IEC61215-2:2016
CHSM72M(DG)/F-BH-425	Mono	1500	48,43	20	10,97	425	IEC61215-1:2016 IEC61215-2:2016
CHSM72M(DG)/F-BH-430	Mono	1500	48,60	20	11,06	430	IEC61215-1:2016 IEC61215-2:2016
CHSM72M(DG)/F-BH-435	Mono	1500	48,90	20	11,12	435	IEC61215-1:2016 IEC61215-2:2016
CHSM72M(DG)/F-BH-440	Mono	1500	49,11	20	11,20	440	IEC61215-1:2016 IEC61215-2:2016
CHSM72M(DG)/F-BH-445	Mono	1500	49,44	20	11,25	445	IEC61215-1:2016 IEC61215-2:2016
CHSM72M(DG)/F-BH-450	Mono	1500	49,78	20	11,30	450	IEC61215-1:2016 IEC61215-2:2016
CHSM72M(DG)/F-BH-455	Mono	1500	50,07	20	11,36	455	IEC61215-1:2016 IEC61215-2:2016
CHSM72M(DG)-BH-515	Mono	1500	48,9	30	13,28	515	IEC61215-1:2016 IEC61215-2:2016
CHSM72M(DG)-BH-520	Mono	1500	49,1	30	13,32	520	IEC61215-1:2016 IEC61215-2:2016

Fecha de Emisión: 2019-12-12
 Fecha de Vencimiento: 2022-12-12
 Versión 7; 2021-12-16

Página 8 de 46



This document cancels and supersedes the last version of this certificate number issued by SGS Colombia S.A.S.

Any complaint, appeal or enquiry about the validity of this certificate/report may be sent to so.servicioalcliente@sgs.com, via phone No. 7422274 ext. 13602 and its validity can be checked at <https://www.sgs.com/en/certified-clients-and-products>

This document is issued by the Company under its General Conditions of Service accessible at <http://www.sgs.com/terms-and-conditions.htm>. Attention is drawn to the limitation of liability, indemnification and jurisdiction issues defined therein.

Any holder of this document is advised that information contained herein reflects the Company's findings at the time of its intervention only and within the limits of Client's instructions, if any. The Company's sole responsibility is to its Client and this document does not exonerate parties to a transaction from exercising all their rights and obligations under the transaction documents. Any unauthorized alteration, forgery or falsification of the content or appearance of this document is unlawful and offenders may be prosecuted to the fullest extent of the law.

CRS-C-06-05 V.4 junio 2019





SGS COLOMBIA S.A.S.

CRS-F490101

ORDEN No. 4200-33938

CERTIFICADO No. CRS15121

ORDEN CERT. No. CO-CERT191201757-08

CERTIFICADO DE CONFORMIDAD DE PRODUCTO

Chint Solar (Zhejiang) Co., Ltd.

Building 1, No. 1355, Bin'an Road, Binjiang District, Hangzhou, 310052, Zhejiang, China

Referencia	Tipo	Tensión Máxima Del Sistema (V)	Tensión En Circuito Abierto (V)	Corriente Nominal (A)	Corriente De Cortocircuito (A)	Potencia Máxima Del Módulo (W)	Estándar De Ensayo
CHSM72M(DG)-BH-525	Mono	1500	49,3	30	13,4	525	IEC61215-1:2016 IEC61215-2:2016
CHSM72M(DG)-BH-530	Mono	1500	49,5	30	13,48	530	IEC61215-1:2016 IEC61215-2:2016
CHSM72M(DG)-BH-535	Mono	1500	49,7	30	13,57	535	IEC61215-1:2016 IEC61215-2:2016
CHSM72M(DG)-BH-540	Mono	1500	49,9	30	13,66	540	IEC61215-1:2016 IEC61215-2:2016
CHSM72M(DG)-BH-545	Mono	1500	50,1	30	13,75	545	IEC61215-1:2016 IEC61215-2:2016
CHSM72M(DG)/F-BH-515	Mono	1500	48,9	30	13,28	515	IEC61215-1:2016 IEC61215-2:2016
CHSM72M(DG)/F-BH-520	Mono	1500	49,1	30	13,32	520	IEC61215-1:2016 IEC61215-2:2016
CHSM72M(DG)/F-BH-525	Mono	1500	49,3	30	13,4	525	IEC61215-1:2016 IEC61215-2:2016
CHSM72M(DG)/F-BH-530	Mono	1500	49,5	30	13,48	530	IEC61215-1:2016 IEC61215-2:2016
CHSM72M(DG)/F-BH-535	Mono	1500	49,7	30	13,57	535	IEC61215-1:2016 IEC61215-2:2016
CHSM72M(DG)/F-BH-540	Mono	1500	49,9	30	13,66	540	IEC61215-1:2016 IEC61215-2:2016
CHSM72M(DG)/F-BH-545	Mono	1500	50,1	30	13,75	545	IEC61215-1:2016 IEC61215-2:2016
CHSM60M(DG)-BH-305	Mono	1500	39,66	20	9,72	305	IEC61215-1:2016 IEC61215-2:2016
CHSM60M(DG)-BH-310	Mono	1500	39,85	20	9,79	310	IEC61215-1:2016 IEC61215-2:2016
CHSM60M(DG)-BH-315	Mono	1500	40,04	20	9,86	315	IEC61215-1:2016 IEC61215-2:2016
CHSM60M(DG)-BH-320	Mono	1500	40,23	20	9,93	320	IEC61215-1:2016 IEC61215-2:2016

Fecha de Emisión: 2019-12-12

Fecha de Vencimiento: 2022-12-12

Versión 7; 2021-12-16

Página 9 de 46



This document cancels and supersedes the last version of this certificate number issued by SGS Colombia S.A.S.



Any complaint, appeal or enquiry about the validity of this certificate/report may be sent to so.servicioalcliente@sgs.com, via phone No. 7422274 ext. 13602 and its validity can be checked at <https://www.sgs.com/en/certified-clients-and-products>

This document is issued by the Company under its General Conditions of Service accessible at <http://www.sgs.com/terms-and-conditions.html>. Attention is drawn to the limitation of liability, indemnification and jurisdiction issues defined therein.

Any holder of this document is advised that information contained herein reflects the Company's findings at the time of its intervention only and within the limits of Client's instructions, if any. The Company's sole responsibility is to its Client and this document does not exonerate parties to a transaction from exercising all their rights and obligations under the transaction documents. Any unauthorized alteration, forgery or falsification of the content or appearance of this document is unlawful and offenders may be prosecuted to the fullest extent of the law.

CRS-C-06-05 V.4 junio 2019



SGS COLOMBIA S.A.S.

CRS-F490101

ORDEN No. 4200-33938

CERTIFICADO No. CRS15121

ORDEN CERT. No. CO-CERT191201757-08

CERTIFICADO DE CONFORMIDAD DE PRODUCTO

Chint Solar (Zhejiang) Co., Ltd.

Building 1, No. 1355, Bin'an Road, Binjiang District, Hangzhou, 310052, Zhejiang, China

Referencia	Tipo	Tensión Máxima Del Sistema (V)	Tensión En Circuito Abierto (V)	Corriente Nominal (A)	Corriente De Cortocircuito (A)	Potencia Máxima Del Módulo (W)	Estándar De Ensayo
CHSM60M(DG)-BH-325	Mono	1500	40,42	20	10,00	325	IEC61215-1:2016 IEC61215-2:2016
CHSM60M(DG)-BH-330	Mono	1500	40,61	20	10,07	330	IEC61215-1:2016 IEC61215-2:2016
CHSM60M(DG)-BH-335	Mono	1500	40,80	20	10,14	335	IEC61215-1:2016 IEC61215-2:2016
CHSM60M(DG)-BH-340	Mono	1500	40,99	20	10,21	340	IEC61215-1:2016 IEC61215-2:2016
CHSM60M(DG)-BH-345	Mono	1500	41,18	20	10,28	345	IEC61215-1:2016 IEC61215-2:2016
CHSM60M(DG)-BH-350	Mono	1500	41,37	20	10,35	350	IEC61215-1:2016 IEC61215-2:2016
CHSM60M(DG)-BH-355	Mono	1500	40,12	20	11,06	355	IEC61215-1:2016 IEC61215-2:2016
CHSM60M(DG)-BH-360	Mono	1500	40,47	20	11,12	360	IEC61215-1:2016 IEC61215-2:2016
CHSM60M(DG)-BH-365	Mono	1500	40,74	20	11,20	365	IEC61215-1:2016 IEC61215-2:2016
CHSM60M(DG)-BH-370	Mono	1500	41,11	20	11,25	370	IEC61215-1:2016 IEC61215-2:2016
CHSM60M(DG)-BH-375	Mono	1500	41,48	20	11,30	375	IEC61215-1:2016 IEC61215-2:2016
CHSM60M(DG)-BH-380	Mono	1500	41,81	20	11,36	380	IEC61215-1:2016 IEC61215-2:2016
CHSM60M(DG)/F-BH-305	Mono	1500	39,66	20	9,72	305	IEC61215-1:2016 IEC61215-2:2016
CHSM60M(DG)/F-BH-310	Mono	1500	39,85	20	9,79	310	IEC61215-1:2016 IEC61215-2:2016
CHSM60M(DG)/F-BH-315	Mono	1500	40,04	20	9,86	315	IEC61215-1:2016 IEC61215-2:2016
CHSM60M(DG)/F-BH-320	Mono	1500	40,23	20	9,93	320	IEC61215-1:2016 IEC61215-2:2016

Fecha de Emisión: 2019-12-12

Fecha de Vencimiento: 2022-12-12

Versión 7; 2021-12-16

Página 10 de 46



This document cancels and supersedes the last version of this certificate number issued by SGS Colombia S.A.S.

Any complaint, appeal or enquiry about the validity of this certificate/report may be sent to so.servicioalcliente@sgs.com, via phone No. 7422274 ext. 13602 and its validity can be checked at <https://www.sgs.com/en/certified-clients-and-products>

This document is issued by the Company under its General Conditions of Service accessible at <http://www.sgs.com/terms-and-conditions.html>. Attention is drawn to the limitation of liability, indemnification and jurisdiction issues defined therein.

Any holder of this document is advised that information contained herein reflects the Company's findings at the time of its intervention only and within the limits of Client's instructions, if any. The Company's sole responsibility is to its Client and this document does not exonerate parties to a transaction from exercising all their rights and obligations under the transaction documents. Any unauthorized alteration, forgery or falsification of the content or appearance of this document is unlawful and offenders may be prosecuted to the fullest extent of the law.

CRS-C-06-05 V.4 junio 2019





SGS COLOMBIA S.A.S.
CRS-F490101
ORDEN No. 4200-33938
CERTIFICADO No. CRS15121
ORDEN CERT. No. CO-CERT191201757-08
CERTIFICADO DE CONFORMIDAD DE PRODUCTO
Chint Solar (Zhejiang) Co., Ltd.
Building 1, No. 1355, Bin'an Road, Binjiang District, Hangzhou, 310052, Zhejiang, China

Referencia	Tipo	Tensión Máxima Del Sistema (V)	Tensión En Circuito Abierto (V)	Corriente Nominal (A)	Corriente De Cortocircuito (A)	Potencia Máxima Del Módulo (W)	Estándar De Ensayo
CHSM60M(DG)/F-BH-325	Mono	1500	40.42	20	10.00	325	IEC61215-1:2016 IEC61215-2:2016
CHSM60M(DG)/F-BH-330	Mono	1500	40.61	20	10.07	330	IEC61215-1:2016 IEC61215-2:2016
CHSM60M(DG)/F-BH-335	Mono	1500	40.80	20	10.14	335	IEC61215-1:2016 IEC61215-2:2016
CHSM60M(DG)/F-BH-340	Mono	1500	40.99	20	10.21	340	IEC61215-1:2016 IEC61215-2:2016
CHSM60M(DG)/F-BH-345	Mono	1500	41.18	20	10.28	345	IEC61215-1:2016 IEC61215-2:2016
CHSM60M(DG)/F-BH-350	Mono	1500	41.37	20	10.35	350	IEC61215-1:2016 IEC61215-2:2016
CHSM60M(DG)/F-BH-355	Mono	1500	40.12	20	11.06	355	IEC61215-1:2016 IEC61215-2:2016
CHSM60M(DG)/F-BH-360	Mono	1500	40.47	20	11.12	360	IEC61215-1:2016 IEC61215-2:2016
CHSM60M(DG)/F-BH-365	Mono	1500	40.74	20	11.20	365	IEC61215-1:2016 IEC61215-2:2016
CHSM60M(DG)/F-BH-370	Mono	1500	41.11	20	11.25	370	IEC61215-1:2016 IEC61215-2:2016
CHSM60M(DG)/F-BH-375	Mono	1500	41.48	20	11.30	375	IEC61215-1:2016 IEC61215-2:2016
CHSM60M(DG)/F-BH-380	Mono	1500	41.81	20	11.36	380	IEC61215-1:2016 IEC61215-2:2016
CHSM72M(DGT)-BH-355	Mono	1500	46.72	20	9.57	355	IEC61215-1:2016 IEC61215-2:2016
CHSM72M(DGT)-BH-360	Mono	1500	46.90	20	9.65	360	IEC61215-1:2016 IEC61215-2:2016
CHSM72M(DGT)-BH-365	Mono	1500	47.08	20	9.73	365	IEC61215-1:2016 IEC61215-2:2016
CHSM72M(DGT)-BH-370	Mono	1500	47.26	20	9.81	370	IEC61215-1:2016 IEC61215-2:2016

Fecha de Emisión: 2019-12-12
 Fecha de Vencimiento: 2022-12-12
 Versión 7; 2021-12-16

Página 11 de 46



This document cancels and supersedes the last version of this certificate number issued by SGS Colombia S.A.S.

Any complaint, appeal or enquiry about the validity of this certificate/report may be sent to so.servicioalcliente@sgs.com, via phone No. 7422274 ext. 13602 and its validity can be checked at <https://www.sgs.com/en/certified-clients-and-products>

This document is issued by the Company under its General Conditions of Service accessible at <http://www.sgs.com/terms-and-conditions.html>. Attention is drawn to the limitation of liability, indemnification and jurisdiction issues defined therein.

Any holder of this document is advised that information contained herein reflects the Company's findings at the time of its intervention only and within the limits of Client's instructions, if any. The Company's sole responsibility is to its Client and this document does not exonerate parties to a transaction from exercising all their rights and obligations under the transaction documents. Any unauthorized alteration, forgery or falsification of the content or appearance of this document is unlawful and offenders may be prosecuted to the fullest extent of the law.

CRS-C-06-05 V.4 junio 2019





SGS COLOMBIA S.A.S.
CRS-F490101
ORDEN No. 4200-33938
CERTIFICADO No. CRS15121
ORDEN CERT. No. CO-CERT191201757-08
CERTIFICADO DE CONFORMIDAD DE PRODUCTO
Chint Solar (Zhejiang) Co., Ltd.
Building 1, No. 1355, Bin'an Road, Binjiang District, Hangzhou, 310052, Zhejiang, China

Referencia	Tipo	Tensión Máxima Del Sistema (V)	Tensión En Circuito Abierto (V)	Corriente Nominal (A)	Corriente De Cortocircuito (A)	Potencia Máxima Del Módulo (W)	Estándar De Ensayo
CHSM72M(DGT)-BH-375	Mono	1500	47.44	20	9.89	375	IEC61215-1:2016 IEC61215-2:2016
CHSM72M(DGT)-BH-380	Mono	1500	47.62	20	9.97	380	IEC61215-1:2016 IEC61215-2:2016
CHSM72M(DGT)-BH-385	Mono	1500	47.80	20	10.05	385	IEC61215-1:2016 IEC61215-2:2016
CHSM72M(DGT)-BH-390	Mono	1500	47.98	20	10.13	390	IEC61215-1:2016 IEC61215-2:2016
CHSM72M(DGT)-BH-395	Mono	1500	48.16	20	10.21	395	IEC61215-1:2016 IEC61215-2:2016
CHSM72M(DGT)-BH-400	Mono	1500	48.34	20	10.29	400	IEC61215-1:2016 IEC61215-2:2016
CHSM72M(DGT)-BH-405	Mono	1500	48.52	20	10.37	405	IEC61215-1:2016 IEC61215-2:2016
CHSM72M(DGT)-BH-410	Mono	1500	48.70	20	10.45	410	IEC61215-1:2016 IEC61215-2:2016
CHSM72M(DGT)-BH-415	Mono	1500	48.88	20	10.53	415	IEC61215-1:2016 IEC61215-2:2016
CHSM72M(DGT)-BH-420	Mono	1500	49.06	20	10.61	420	IEC61215-1:2016 IEC61215-2:2016
CHSM72M(DGT)-BH-425	Mono	1500	49.08	20	10.92	425	IEC61215-1:2016 IEC61215-2:2016
CHSM72M(DGT)-BH-430	Mono	1500	49.38	20	10.98	430	IEC61215-1:2016 IEC61215-2:2016
CHSM72M(DGT)-BH-435	Mono	1500	49.55	20	11.07	435	IEC61215-1:2016 IEC61215-2:2016
CHSM72M(DGT)-BH-440	Mono	1500	49.72	20	11.16	440	IEC61215-1:2016 IEC61215-2:2016
CHSM72M(DGT)-BH-445	Mono	1500	50.01	20	11.22	445	IEC61215-1:2016 IEC61215-2:2016
CHSM72M(DGT)/F-BH-355	Mono	1500	46.72	20	9.57	355	IEC61215-1:2016 IEC61215-2:2016

Fecha de Emisión: 2019-12-12
 Fecha de Vencimiento: 2022-12-12
 Versión 7; 2021-12-16

Página 12 de 46



This document cancels and supersedes the last version of this certificate number issued by SGS Colombia S.A.S.

Any complaint, appeal or enquiry about the validity of this certificate/report may be sent to so.servicioalcliente@sgs.com, via phone No. 7422274 ext. 13602 and its validity can be checked at <https://www.sgs.com/en/certified-clients-and-products>

This document is issued by the Company under its General Conditions of Service accessible at <http://www.sgs.com/terms-and-conditions.html>. Attention is drawn to the limitation of liability, indemnification and jurisdiction issues defined therein.

Any holder of this document is advised that information contained herein reflects the Company's findings at the time of its intervention only and within the limits of Client's instructions, if any. The Company's sole responsibility is to its Client and this document does not exonerate parties to a transaction from exercising all their rights and obligations under the transaction documents. Any unauthorized alteration, forgery or falsification of the content or appearance of this document is unlawful and offenders may be prosecuted to the fullest extent of the law.

CRS-C-06-05 V.4 junio 2019





SGS COLOMBIA S.A.S.
CRS-F490101
ORDEN No. 4200-33938
CERTIFICADO No. CRS15121
ORDEN CERT. No. CO-CERT191201757-08
CERTIFICADO DE CONFORMIDAD DE PRODUCTO
Chint Solar (Zhejiang) Co., Ltd.
Building 1, No. 1355, Bin'an Road, Binjiang District, Hangzhou, 310052, Zhejiang, China

Referencia	Tipo	Tensión Máxima Del Sistema (V)	Tensión En Circuito Abierto (V)	Corriente Nominal (A)	Corriente De Cortocircuito (A)	Potencia Máxima Del Módulo (W)	Estándar De Ensayo
CHSM72M(DGT)/F-BH-360	Mono	1500	46.90	20	9.65	360	IEC61215-1:2016 IEC61215-2:2016
CHSM72M(DGT)/F-BH-365	Mono	1500	47.08	20	9.73	365	IEC61215-1:2016 IEC61215-2:2016
CHSM72M(DGT)/F-BH-370	Mono	1500	47.26	20	9.81	370	IEC61215-1:2016 IEC61215-2:2016
CHSM72M(DGT)/F-BH-375	Mono	1500	47.44	20	9.89	375	IEC61215-1:2016 IEC61215-2:2016
CHSM72M(DGT)/F-BH-380	Mono	1500	47.62	20	9.97	380	IEC61215-1:2016 IEC61215-2:2016
CHSM72M(DGT)/F-BH-385	Mono	1500	47.80	20	10.05	385	IEC61215-1:2016 IEC61215-2:2016
CHSM72M(DGT)/F-BH-390	Mono	1500	47.98	20	10.13	390	IEC61215-1:2016 IEC61215-2:2016
CHSM72M(DGT)/F-BH-395	Mono	1500	48.16	20	10.21	395	IEC61215-1:2016 IEC61215-2:2016
CHSM72M(DGT)/F-BH-400	Mono	1500	48.34	20	10.29	400	IEC61215-1:2016 IEC61215-2:2016
CHSM72M(DGT)/F-BH-405	Mono	1500	48.52	20	10.37	405	IEC61215-1:2016 IEC61215-2:2016
CHSM72M(DGT)/F-BH-410	Mono	1500	48.70	20	10.45	410	IEC61215-1:2016 IEC61215-2:2016
CHSM72M(DGT)/F-BH-415	Mono	1500	48.88	20	10.53	415	IEC61215-1:2016 IEC61215-2:2016
CHSM72M(DGT)/F-BH-420	Mono	1500	49.06	20	10.61	420	IEC61215-1:2016 IEC61215-2:2016
CHSM72M(DGT)/F-BH-425	Mono	1500	49.08	20	10.92	425	IEC61215-1:2016 IEC61215-2:2016
CHSM72M(DGT)/F-BH-430	Mono	1500	49.38	20	10.98	430	IEC61215-1:2016 IEC61215-2:2016
CHSM72M(DGT)/F-BH-435	Mono	1500	49.55	20	11.07	435	IEC61215-1:2016 IEC61215-2:2016

Fecha de Emisión: 2019-12-12
 Fecha de Vencimiento: 2022-12-12
 Versión 7; 2021-12-16

Página 13 de 46



This document cancels and supersedes the last version of this certificate number issued by SGS Colombia S.A.S.



Any complaint, appeal or enquiry about the validity of this certificate/report may be sent to so.servicioalcliente@sgs.com, via phone No. 7422274 ext. 13602 and its validity can be checked at <https://www.sgs.com/en/certified-clients-and-products>

This document is issued by the Company under its General Conditions of Service accessible at <http://www.sgs.com/terms-and-conditions.htm>. Attention is drawn to the limitation of liability, indemnification and jurisdiction issues defined therein.

Any holder of this document is advised that information contained herein reflects the Company's findings at the time of its intervention only and within the limits of Client's instructions, if any. The Company's sole responsibility is to its Client and this document does not exonerate parties to a transaction from exercising all their rights and obligations under the transaction documents. Any unauthorized alteration, forgery or falsification of the content or appearance of this document is unlawful and offenders may be prosecuted to the fullest extent of the law.



SGS COLOMBIA S.A.S.

CRS-F490101

ORDEN No. 4200-33938

CERTIFICADO No. CRS15121

ORDEN CERT. No. CO-CERT191201757-08

CERTIFICADO DE CONFORMIDAD DE PRODUCTO

Chint Solar (Zhejiang) Co., Ltd.

Building 1, No. 1355, Bin'an Road, Binjiang District, Hangzhou, 310052, Zhejiang, China

Referencia	Tipo	Tensión Máxima Del Sistema (V)	Tensión En Circuito Abierto (V)	Corriente Nominal (A)	Corriente De Cortocircuito (A)	Potencia Máxima Del Módulo (W)	Estándar De Ensayo
CHSM72M(DGT)/F-BH-440	Mono	1500	49,72	20	11,16	440	IEC61215-1:2016 IEC61215-2:2016
CHSM72M(DGT)/F-BH-445	Mono	1500	50,01	20	11,22	445	IEC61215-1:2016 IEC61215-2:2016
CHSM72M(DGT)-BH-505	Mono	1500	48,9	30	13,28	505	IEC61215-1:2016 IEC61215-2:2016
CHSM72M(DGT)-BH-510	Mono	1500	49,1	30	13,29	510	IEC61215-1:2016 IEC61215-2:2016
CHSM72M(DGT)-BH-515	Mono	1500	49,3	30	13,3	515	IEC61215-1:2016 IEC61215-2:2016
CHSM72M(DGT)-BH-520	Mono	1500	49,5	30	13,31	520	IEC61215-1:2016 IEC61215-2:2016
CHSM72M(DGT)-BH-525	Mono	1500	49,7	30	13,32	525	IEC61215-1:2016 IEC61215-2:2016
CHSM72M(DGT)-BH-530	Mono	1500	49,9	30	13,41	530	IEC61215-1:2016 IEC61215-2:2016
CHSM72M(DGT)-BH-535	Mono	1500	50,1	30	13,5	535	IEC61215-1:2016 IEC61215-2:2016
CHSM72M(DGT)-BH-540	Mono	1500	50,3	30	13,59	540	IEC61215-1:2016 IEC61215-2:2016
CHSM72M(DGT)-BH-545	Mono	1500	50,5	30	13,68	545	IEC61215-1:2016 IEC61215-2:2016
CHSM72M(DGT)/F-BH-505	Mono	1500	48,9	30	13,28	505	IEC61215-1:2016 IEC61215-2:2016
CHSM72M(DGT)/F-BH-510	Mono	1500	49,1	30	13,29	510	IEC61215-1:2016 IEC61215-2:2016
CHSM72M(DGT)/F-BH-515	Mono	1500	49,3	30	13,3	515	IEC61215-1:2016 IEC61215-2:2016
CHSM72M(DGT)/F-BH-520	Mono	1500	49,5	30	13,31	520	IEC61215-1:2016 IEC61215-2:2016

Fecha de Emisión: 2019-12-12

Fecha de Vencimiento: 2022-12-12

Versión 7; 2021-12-16

Página 14 de 46



This document cancels and supersedes the last version of this certificate number issued by SGS Colombia S.A.S.



Any complaint, appeal or enquiry about the validity of this certificate/report may be sent to so.servicioalcliente@sgs.com, via phone No. 7422274 ext. 13602 and its validity can be checked at <https://www.sgs.com/en/certified-clients-and-products>

This document is issued by the Company under its General Conditions of Service accessible at <http://www.sgs.com/terms-and-conditions.html>. Attention is drawn to the limitation of liability, indemnification and jurisdiction issues defined therein.

Any holder of this document is advised that information contained herein reflects the Company's findings at the time of its intervention only and within the limits of Client's instructions, if any. The Company's sole responsibility is to its Client and this document does not exonerate parties to a transaction from exercising all their rights and obligations under the transaction documents. Any unauthorized alteration, forgery or falsification of the content or appearance of this document is unlawful and offenders may be prosecuted to the fullest extent of the law.

CRS-C-06-05 V.4 junio 2019



SGS COLOMBIA S.A.S.
CRS-F490101
ORDEN No. 4200-33938
CERTIFICADO No. CRS15121
ORDEN CERT. No. CO-CERT191201757-08
CERTIFICADO DE CONFORMIDAD DE PRODUCTO
Chint Solar (Zhejiang) Co., Ltd.
Building 1, No. 1355, Bin'an Road, Binjiang District, Hangzhou, 310052, Zhejiang, China

Referencia	Tipo	Tensión Máxima Del Sistema (V)	Tensión En Circuito Abierto (V)	Corriente Nominal (A)	Corriente De Cortocircuito (A)	Potencia Máxima Del Módulo (W)	Estándar De Ensayo
CHSM72M(DGT)/F-BH-525	Mono	1500	49,7	30	13,32	525	IEC61215-1:2016 IEC61215-2:2016
CHSM72M(DGT)/F-BH-530	Mono	1500	49,9	30	13,41	530	IEC61215-1:2016 IEC61215-2:2016
CHSM72M(DGT)/F-BH-535	Mono	1500	50,1	30	13,5	535	IEC61215-1:2016 IEC61215-2:2016
CHSM72M(DGT)/F-BH-540	Mono	1500	50,3	30	13,59	540	IEC61215-1:2016 IEC61215-2:2016
CHSM72M(DGT)/F-BH-545	Mono	1500	50,5	30	13,68	545	IEC61215-1:2016 IEC61215-2:2016
CHSM60M(DGT)-BH-295	Mono	1500	39,49	20	9,51	295	IEC61215-1:2016 IEC61215-2:2016
CHSM60M(DGT)-BH-300	Mono	1500	39,68	20	9,58	300	IEC61215-1:2016 IEC61215-2:2016
CHSM60M(DGT)-BH-305	Mono	1500	39,87	20	9,65	305	IEC61215-1:2016 IEC61215-2:2016
CHSM60M(DGT)-BH-310	Mono	1500	40,06	20	9,72	310	IEC61215-1:2016 IEC61215-2:2016
CHSM60M(DGT)-BH-315	Mono	1500	40,25	20	9,79	315	IEC61215-1:2016 IEC61215-2:2016
CHSM60M(DGT)-BH-320	Mono	1500	40,44	20	9,86	320	IEC61215-1:2016 IEC61215-2:2016
CHSM60M(DGT)-BH-325	Mono	1500	40,63	20	9,93	325	IEC61215-1:2016 IEC61215-2:2016
CHSM60M(DGT)-BH-330	Mono	1500	40,82	20	10,00	330	IEC61215-1:2016 IEC61215-2:2016
CHSM60M(DGT)-BH-335	Mono	1500	41,01	20	10,07	335	IEC61215-1:2016 IEC61215-2:2016
CHSM60M(DGT)-BH-340	Mono	1500	41,20	20	10,14	340	IEC61215-1:2016 IEC61215-2:2016
CHSM60M(DGT)-BH-345	Mono	1500	41,39	20	10,21	345	IEC61215-1:2016 IEC61215-2:2016

Fecha de Emisión: 2019-12-12
 Fecha de Vencimiento: 2022-12-12
 Versión 7; 2021-12-16

Página 15 de 46



This document cancels and supersedes the last version of this certificate number issued by SGS Colombia S.A.S.



Any complaint, appeal or enquiry about the validity of this certificate/report may be sent to so.servicioalcliente@sgs.com, via phone No. 7422274 ext. 13602 and its validity can be checked at <https://www.sgs.com/en/certified-clients-and-products>

This document is issued by the Company under its General Conditions of Service accessible at <http://www.sgs.com/terms-and-conditions.html>. Attention is drawn to the limitation of liability, indemnification and jurisdiction issues defined therein.

Any holder of this document is advised that information contained herein reflects the Company's findings at the time of its intervention only and within the limits of Client's instructions, if any. The Company's sole responsibility is to its Client and this document does not exonerate parties to a transaction from exercising all their rights and obligations under the transaction documents. Any unauthorized alteration, forgery or falsification of the content or appearance of this document is unlawful and offenders may be prosecuted to the fullest extent of the law.



SGS COLOMBIA S.A.S.

CRS-F490101

ORDEN No. 4200-33938

CERTIFICADO No. CRS15121

ORDEN CERT. No. CO-CERT191201757-08

CERTIFICADO DE CONFORMIDAD DE PRODUCTO

Chint Solar (Zhejiang) Co., Ltd.

Building 1, No. 1355, Bin'an Road, Binjiang District, Hangzhou, 310052, Zhejiang, China

Referencia	Tipo	Tensión Máxima Del Sistema (V)	Tensión En Circuito Abierto (V)	Corriente Nominal (A)	Corriente De Cortocircuito (A)	Potencia Máxima Del Módulo (W)	Estándar De Ensayo
CHSM60M(DGT)-BH-350	Mono	1500	41.58	20	10.28	350	IEC61215-1:2016 IEC61215-2:2016
CHSM60M(DGT)-BH-355	Mono	1500	40.26	20	11.12	355	IEC61215-1:2016 IEC61215-2:2016
CHSM60M(DGT)-BH-360	Mono	1500	40.61	20	11.18	360	IEC61215-1:2016 IEC61215-2:2016
CHSM60M(DGT)-BH-365	Mono	1500	40.84	20	11.27	365	IEC61215-1:2016 IEC61215-2:2016
CHSM60M(DGT)-BH-370	Mono	1500	41.14	20	11.34	370	IEC61215-1:2016 IEC61215-2:2016
CHSM60M(DGT)/F-BH-295	Mono	1500	39.49	20	9.51	295	IEC61215-1:2016 IEC61215-2:2016
CHSM60M(DGT)/F-BH-300	Mono	1500	39.68	20	9.58	300	IEC61215-1:2016 IEC61215-2:2016
CHSM60M(DGT)/F-BH-305	Mono	1500	39.87	20	9.65	305	IEC61215-1:2016 IEC61215-2:2016
CHSM60M(DGT)/F-BH-310	Mono	1500	40.06	20	9.72	310	IEC61215-1:2016 IEC61215-2:2016
CHSM60M(DGT)/F-BH-315	Mono	1500	40.25	20	9.79	315	IEC61215-1:2016 IEC61215-2:2016
CHSM60M(DGT)/F-BH-320	Mono	1500	40.44	20	9.86	320	IEC61215-1:2016 IEC61215-2:2016
CHSM60M(DGT)/F-BH-325	Mono	1500	40.63	20	9.93	325	IEC61215-1:2016 IEC61215-2:2016
CHSM60M(DGT)/F-BH-330	Mono	1500	40.82	20	10.00	330	IEC61215-1:2016 IEC61215-2:2016
CHSM60M(DGT)/F-BH-335	Mono	1500	41.01	20	10.07	335	IEC61215-1:2016 IEC61215-2:2016
CHSM60M(DGT)/F-BH-340	Mono	1500	41.20	20	10.14	340	IEC61215-1:2016 IEC61215-2:2016
CHSM60M(DGT)/F-BH-345	Mono	1500	41.39	20	10.21	345	IEC61215-1:2016 IEC61215-2:2016

Fecha de Emisión: 2019-12-12

Fecha de Vencimiento: 2022-12-12

Versión 7; 2021-12-16

Página 16 de 46



This document cancels and supersedes the last version of this certificate number issued by SGS Colombia S.A.S.



Any complaint, appeal or enquiry about the validity of this certificate/report may be sent to so.servicioalcliente@sgs.com, via phone No. 7422274 ext. 13602 and its validity can be checked at <https://www.sgs.com/en/certified-clients-and-products>

This document is issued by the Company under its General Conditions of Service accessible at <http://www.sgs.com/terms-and-conditions.html>. Attention is drawn to the limitation of liability, indemnification and jurisdiction issues defined therein.

Any holder of this document is advised that information contained herein reflects the Company's findings at the time of its intervention only and within the limits of Client's instructions, if any. The Company's sole responsibility is to its Client and this document does not exonerate parties to a transaction from exercising all their rights and obligations under the transaction documents. Any unauthorized alteration, forgery or falsification of the content or appearance of this document is unlawful and offenders may be prosecuted to the fullest extent of the law.



SGS COLOMBIA S.A.S.
CRS-F490101
ORDEN No. 4200-33938
CERTIFICADO No. CRS15121
ORDEN CERT. No. CO-CERT191201757-08
CERTIFICADO DE CONFORMIDAD DE PRODUCTO
Chint Solar (Zhejiang) Co., Ltd.
Building 1, No. 1355, Bin'an Road, Binjiang District, Hangzhou, 310052, Zhejiang, China

Referencia	Tipo	Tensión Máxima Del Sistema (V)	Tensión En Circuito Abierto (V)	Corriente Nominal (A)	Corriente De Cortocircuito (A)	Potencia Máxima Del Módulo (W)	Estándar De Ensayo
CHSM60M(DGT)/F-BH-350	Mono	1500	41.58	20	10.28	350	IEC61215-1:2016 IEC61215-2:2016
CHSM60M(DGT)/F-BH-355	Mono	1500	40.26	20	11.12	355	IEC61215-1:2016 IEC61215-2:2016
CHSM60M(DGT)/F-BH-360	Mono	1500	40.61	20	11.18	360	IEC61215-1:2016 IEC61215-2:2016
CHSM60M(DGT)/F-BH-365	Mono	1500	40.84	20	11.27	365	IEC61215-1:2016 IEC61215-2:2016
CHSM60M(DGT)/F-BH-370	Mono	1500	41.14	20	11.34	370	IEC61215-1:2016 IEC61215-2:2016
CHSM66M(DGT)-BH-465	Mono	1500	44.98	30	12.99	465	IEC61215-1:2016 IEC61215-2:2016
CHSM66M(DGT)-BH-470	Mono	1500	45.18	30	13.09	470	IEC61215-1:2016 IEC61215-2:2016
CHSM66M(DGT)-BH-475	Mono	1500	45.38	30	13.18	475	IEC61215-1:2016 IEC61215-2:2016
CHSM66M(DGT)-BH-480	Mono	1500	45.58	30	13.28	480	IEC61215-1:2016 IEC61215-2:2016
CHSM66M(DGT)-BH-485	Mono	1500	45.78	30	13.38	485	IEC61215-1:2016 IEC61215-2:2016
CHSM66M(DGT)-BH-490	Mono	1500	45.98	30	13.47	490	IEC61215-1:2016 IEC61215-2:2016
CHSM66M(DGT)-BH-495	Mono	1500	46.18	30	13.57	495	IEC61215-1:2016 IEC61215-2:2016
CHSM66M(DGT)/F-BH-465	Mono	1500	44.98	30	12.99	465	IEC61215-1:2016 IEC61215-2:2016

Fecha de Emisión: 2019-12-12
 Fecha de Vencimiento: 2022-12-12
 Versión 7; 2021-12-16

Página 17 de 46



This document cancels and supersedes the last version of this certificate number issued by SGS Colombia S.A.S.

Any complaint, appeal or enquiry about the validity of this certificate/report may be sent to so.servicioalcliente@sgs.com, via phone No. 7422274 ext. 13602 and its validity can be checked at <https://www.sgs.com/en/certified-clients-and-products>

This document is issued by the Company under its General Conditions of Service accessible at <http://www.sgs.com/terms-and-conditions.html>. Attention is drawn to the limitation of liability, indemnification and jurisdiction issues defined therein.

Any holder of this document is advised that information contained herein reflects the Company's findings at the time of its intervention only and within the limits of Client's instructions, if any. The Company's sole responsibility is to its Client and this document does not exonerate parties to a transaction from exercising all their rights and obligations under the transaction documents. Any unauthorized alteration, forgery or falsification of the content or appearance of this document is unlawful and offenders may be prosecuted to the fullest extent of the law.





SGS COLOMBIA S.A.S.
CRS-F490101
ORDEN No. 4200-33938
CERTIFICADO No. CRS15121
ORDEN CERT. No. CO-CERT191201757-08
CERTIFICADO DE CONFORMIDAD DE PRODUCTO
Chint Solar (Zhejiang) Co., Ltd.
Building 1, No. 1355, Bin'an Road, Binjiang District, Hangzhou, 310052, Zhejiang, China

Referencia	Tipo	Tensión Máxima Del Sistema (V)	Tensión En Circuito Abierto (V)	Corriente Nominal (A)	Corriente De Cortocircuito (A)	Potencia Máxima Del Módulo (W)	Estándar De Ensayo
CHSM66M(DGT)/F-BH-470	Mono	1500	45.18	30	13.09	470	IEC61215-1:2016 IEC61215-2:2016
CHSM66M(DGT)/F-BH-475	Mono	1500	45.38	30	13.18	475	IEC61215-1:2016 IEC61215-2:2016
CHSM66M(DGT)/F-BH-480	Mono	1500	45.58	30	13.28	480	IEC61215-1:2016 IEC61215-2:2016
CHSM66M(DGT)/F-BH-485	Mono	1500	45.78	30	13.38	485	IEC61215-1:2016 IEC61215-2:2016
CHSM66M(DGT)/F-BH-490	Mono	1500	45.98	30	13.47	490	IEC61215-1:2016 IEC61215-2:2016
CHSM66M(DGT)/F-BH-495	Mono	1500	46.18	30	13.57	495	IEC61215-1:2016 IEC61215-2:2016
CHSM66M(DG)-BH-475	Mono	1500	44.98	30	13.27	475	IEC61215-1:2016 IEC61215-2:2016
CHSM66M(DG)-BH-480	Mono	1500	45.18	30	13.37	480	IEC61215-1:2016 IEC61215-2:2016
CHSM66M(DG)-BH-485	Mono	1500	45.38	30	13.46	485	IEC61215-1:2016 IEC61215-2:2016
CHSM66M(DG)-BH-490	Mono	1500	45.58	30	13.56	490	IEC61215-1:2016 IEC61215-2:2016
CHSM66M(DG)-BH-495	Mono	1500	45.78	30	13.65	495	IEC61215-1:2016 IEC61215-2:2016
CHSM66M(DG)/F-BH-475	Mono	1500	44.98	30	13.27	475	IEC61215-1:2016 IEC61215-2:2016
CHSM66M(DG)/F-BH-480	Mono	1500	45.18	30	13.37	480	IEC61215-1:2016 IEC61215-2:2016

Fecha de Emisión: 2019-12-12
 Fecha de Vencimiento: 2022-12-12
 Versión 7; 2021-12-16

Página 18 de 46



This document cancels and supersedes the last version of this certificate number issued by SGS Colombia S.A.S.

Any complaint, appeal or enquiry about the validity of this certificate/report may be sent to so.servicioalcliente@sgs.com, via phone No. 7422274 ext. 13602 and its validity can be checked at <https://www.sgs.com/en/certified-clients-and-products>

This document is issued by the Company under its General Conditions of Service accessible at <http://www.sgs.com/terms-and-conditions.html>. Attention is drawn to the limitation of liability, indemnification and jurisdiction issues defined therein.

Any holder of this document is advised that information contained herein reflects the Company's findings at the time of its intervention only and within the limits of Client's instructions, if any. The Company's sole responsibility is to its Client and this document does not exonerate parties to a transaction from exercising all their rights and obligations under the transaction documents. Any unauthorized alteration, forgery or falsification of the content or appearance of this document is unlawful and offenders may be prosecuted to the fullest extent of the law.





SGS COLOMBIA S.A.S.
CRS-F490101
ORDEN No. 4200-33938
CERTIFICADO No. CRS15121
ORDEN CERT. No. CO-CERT191201757-08
CERTIFICADO DE CONFORMIDAD DE PRODUCTO
Chint Solar (Zhejiang) Co., Ltd.
Building 1, No. 1355, Bin'an Road, Binjiang District, Hangzhou, 310052, Zhejiang, China

Referencia	Tipo	Tensión Máxima Del Sistema (V)	Tensión En Circuito Abierto (V)	Corriente Nominal (A)	Corriente De Cortocircuito (A)	Potencia Máxima Del Módulo (W)	Estándar De Ensayo
CHSM66M(DG)/F-BH-485	Mono	1500	45,38	30	13,46	485	IEC61215-1:2016 IEC61215-2:2016
CHSM66M(DG)/F-BH-490	Mono	1500	45,58	30	13,56	490	IEC61215-1:2016 IEC61215-2:2016
CHSM66M(DG)/F-BH-495	Mono	1500	45,78	30	13,65	495	IEC61215-1:2016 IEC61215-2:2016
CHSM6612M(DG)-310	Mono	1500	45,46	15	9,11	310	IEC61215-1:2016 IEC61215-2:2016
CHSM6612M(DG)-315	Mono	1500	45,56	15	9,13	315	IEC61215-1:2016 IEC61215-2:2016
CHSM6612M(DG)-320	Mono	1500	45,71	15	9,17	320	IEC61215-1:2016 IEC61215-2:2016
CHSM6612M(DG)-325	Mono	1500	45,81	15	9,19	325	IEC61215-1:2016 IEC61215-2:2016
CHSM6612M(DG)-330	Mono	1500	46,09	15	9,26	330	IEC61215-1:2016 IEC61215-2:2016
CHSM6612M(DG)-335	Mono	1500	46,29	15	9,35	335	IEC61215-1:2016 IEC61215-2:2016
CHSM6612M(DG)-340	Mono	1500	46,65	15	9,4	340	IEC61215-1:2016 IEC61215-2:2016
CHSM6612M(DG)-345	Mono	1500	46,96	15	9,47	345	IEC61215-1:2016 IEC61215-2:2016
CHSM6612M(DG)-350	Mono	1500	47,27	15	9,54	350	IEC61215-1:2016 IEC61215-2:2016
CHSM6612M(DG)-355	Mono	1500	47,41	15	9,64	355	IEC61215-1:2016 IEC61215-2:2016

Fecha de Emisión: 2019-12-12
 Fecha de Vencimiento: 2022-12-12
 Versión 7; 2021-12-16

Página 19 de 46



This document cancels and supersedes the last version of this certificate number issued by SGS Colombia S.A.S.

Any complaint, appeal or enquiry about the validity of this certificate/report may be sent to so.servicioalcliente@sgs.com, via phone No. 7422274 ext. 13602 and its validity can be checked at <https://www.sgs.com/en/certified-clients-and-products>

This document is issued by the Company under its General Conditions of Service accessible at <http://www.sgs.com/terms-and-conditions.html>. Attention is drawn to the limitation of liability, indemnification and jurisdiction issues defined therein.

Any holder of this document is advised that information contained herein reflects the Company's findings at the time of its intervention only and within the limits of Client's instructions, if any. The Company's sole responsibility is to its Client and this document does not exonerate parties to a transaction from exercising all their rights and obligations under the transaction documents. Any unauthorized alteration, forgery or falsification of the content or appearance of this document is unlawful and offenders may be prosecuted to the fullest extent of the law.

CRS-C-06-05 V.4 junio 2019





SGS COLOMBIA S.A.S.
CRS-F490101
ORDEN No. 4200-33938
CERTIFICADO No. CRS15121
ORDEN CERT. No. CO-CERT191201757-08
CERTIFICADO DE CONFORMIDAD DE PRODUCTO
Chint Solar (Zhejiang) Co., Ltd.
Building 1, No. 1355, Bin'an Road, Binjiang District, Hangzhou, 310052, Zhejiang, China

Referencia	Tipo	Tensión Máxima Del Sistema (V)	Tensión En Circuito Abierto (V)	Corriente Nominal (A)	Corriente De Cortocircuito (A)	Potencia Máxima Del Módulo (W)	Estándar De Ensayo
CHSM6612M(DG)-360	Mono	1500	47,52	15	9,73	360	IEC61215-1:2016 IEC61215-2:2016
CHSM6612M(DG)/F-310	Mono	1500	45,46	15	9,11	310	IEC61215-1:2016 IEC61215-2:2016
CHSM6612M(DG)/F-315	Mono	1500	45,56	15	9,13	315	IEC61215-1:2016 IEC61215-2:2016
CHSM6612M(DG)/F-320	Mono	1500	45,71	15	9,17	320	IEC61215-1:2016 IEC61215-2:2016
CHSM6612M(DG)/F-325	Mono	1500	45,81	15	9,19	325	IEC61215-1:2016 IEC61215-2:2016
CHSM6612M(DG)/F-330	Mono	1500	46,09	15	9,26	330	IEC61215-1:2016 IEC61215-2:2016
CHSM6612M(DG)/F-335	Mono	1500	46,29	15	9,35	335	IEC61215-1:2016 IEC61215-2:2016
CHSM6612M(DG)/F-340	Mono	1500	46,65	15	9,4	340	IEC61215-1:2016 IEC61215-2:2016
CHSM6612M(DG)/F-345	Mono	1500	46,96	15	9,47	345	IEC61215-1:2016 IEC61215-2:2016
CHSM6612M(DG)/F-350	Mono	1500	47,27	15	9,54	350	IEC61215-1:2016 IEC61215-2:2016
CHSM6612M(DG)/F-355	Mono	1500	47,41	15	9,64	355	IEC61215-1:2016 IEC61215-2:2016
CHSM6612M(DG)/F-360	Mono	1500	47,52	15	9,73	360	IEC61215-1:2016 IEC61215-2:2016
CHSM60M(DG)/F-BH-580	Mono	1500	40,9	35	18,21	580	IEC61215-1:2016 IEC61215-2:2016

Fecha de Emisión: 2019-12-12
 Fecha de Vencimiento: 2022-12-12
 Versión 7; 2021-12-16

Página 20 de 46



This document cancels and supersedes the last version of this certificate number issued by SGS Colombia S.A.S.

Any complaint, appeal or enquiry about the validity of this certificate/report may be sent to so.servicioalcliente@sgs.com, via phone No. 7422274 ext. 13602 and its validity can be checked at <https://www.sgs.com/en/certified-clients-and-products>

This document is issued by the Company under its General Conditions of Service accessible at <http://www.sgs.com/terms-and-conditions.html>. Attention is drawn to the limitation of liability, indemnification and jurisdiction issues defined therein.

Any holder of this document is advised that information contained herein reflects the Company's findings at the time of its intervention only and within the limits of Client's instructions, if any. The Company's sole responsibility is to its Client and this document does not exonerate parties to a transaction from exercising all their rights and obligations under the transaction documents. Any unauthorized alteration, forgery or falsification of the content or appearance of this document is unlawful and offenders may be prosecuted to the fullest extent of the law.

CRS-C-06-05 V.4 junio 2019





SGS COLOMBIA S.A.S.
CRS-F490101
ORDEN No. 4200-33938
CERTIFICADO No. CRS15121
ORDEN CERT. No. CO-CERT191201757-08
CERTIFICADO DE CONFORMIDAD DE PRODUCTO
Chint Solar (Zhejiang) Co., Ltd.
Building 1, No. 1355, Bin'an Road, Binjiang District, Hangzhou, 310052, Zhejiang, China

Referencia	Tipo	Tensión Máxima Del Sistema (V)	Tensión En Circuito Abierto (V)	Corriente Nominal (A)	Corriente De Cortocircuito (A)	Potencia Máxima Del Módulo (W)	Estándar De Ensayo
CHSM60M(DG)/F-BH-585	Mono	1500	41,1	35	18,26	585	IEC61215-1:2016 IEC61215-2:2016
CHSM60M(DG)/F-BH-590	Mono	1500	41,3	35	18,31	590	IEC61215-1:2016 IEC61215-2:2016
CHSM60M(DG)/F-BH-595	Mono	1500	41,5	35	18,36	595	IEC61215-1:2016 IEC61215-2:2016
CHSM60M(DG)/F-BH-600	Mono	1500	41,7	35	18,41	600	IEC61215-1:2016 IEC61215-2:2016
CHSM60M(DG)/F-BH-605	Mono	1500	41,9	35	18,46	605	IEC61215-1:2016 IEC61215-2:2016
CHSM60M(DG)/F-BH-610	Mono	1500	42,1	35	18,51	610	IEC61215-1:2016 IEC61215-2:2016
CHSM66M(DG)/F-BH-635	Mono	1500	44,89	35	18,17	635	IEC61215-1:2016 IEC61215-2:2016
CHSM66M(DG)/F-BH-640	Mono	1500	45,09	35	18,22	640	IEC61215-1:2016 IEC61215-2:2016
CHSM66M(DG)/F-BH-645	Mono	1500	45,29	35	18,27	645	IEC61215-1:2016 IEC61215-2:2016
CHSM66M(DG)/F-BH-650	Mono	1500	45,49	35	18,32	650	IEC61215-1:2016 IEC61215-2:2016
CHSM66M(DG)/F-BH-655	Mono	1500	45,69	35	18,37	655	IEC61215-1:2016 IEC61215-2:2016
CHSM66M(DG)/F-BH-660	Mono	1500	45,89	35	18,42	660	IEC61215-1:2016 IEC61215-2:2016
CHSM66M(DG)/F-BH-665	Mono	1500	46,09	35	18,47	665	IEC61215-1:2016 IEC61215-2:2016

Fecha de Emisión: 2019-12-12
 Fecha de Vencimiento: 2022-12-12
 Versión 7; 2021-12-16

Página 21 de 46



This document cancels and supersedes the last version of this certificate number issued by SGS Colombia S.A.S.

Any complaint, appeal or enquiry about the validity of this certificate/report may be sent to so.servicioalcliente@sgs.com, via phone No. 7422274 ext. 13602 and its validity can be checked at <https://www.sgs.com/en/certified-clients-and-products>

This document is issued by the Company under its General Conditions of Service accessible at <http://www.sgs.com/terms-and-conditions.html>. Attention is drawn to the limitation of liability, indemnification and jurisdiction issues defined therein.

Any holder of this document is advised that information contained herein reflects the Company's findings at the time of its intervention only and within the limits of Client's instructions, if any. The Company's sole responsibility is to its Client and this document does not exonerate parties to a transaction from exercising all their rights and obligations under the transaction documents. Any unauthorized alteration, forgery or falsification of the content or appearance of this document is unlawful and offenders may be prosecuted to the fullest extent of the law.

CRS-C-06-05 V.4 junio 2019





SGS COLOMBIA S.A.S.
CRS-F490101
ORDEN No. 4200-33938
CERTIFICADO No. CRS15121
ORDEN CERT. No. CO-CERT191201757-08
CERTIFICADO DE CONFORMIDAD DE PRODUCTO
Chint Solar (Zhejiang) Co., Ltd.
Building 1, No. 1355, Bin'an Road, Binjiang District, Hangzhou, 310052, Zhejiang, China

Referencia	Tipo	Tensión Máxima Del Sistema (V)	Tensión En Circuito Abierto (V)	Corriente Nominal (A)	Corriente De Cortocircuito (A)	Potencia Máxima Del Módulo (W)	Estándar De Ensayo
CHSM66M(DG)/F-BH-670	Mono	1500	46,29	35	18,52	670	IEC61215-1:2016 IEC61215-2:2016
CHSM66M(DG)/F-BH-675	Mono	1500	46,49	35	18,57	675	IEC61215-1:2016 IEC61215-2:2016
CHSM54M(DG)-BH-390	Mono	1500	36,8	30	13,330599	390	IEC61215-1:2016 IEC61215-2:2016
CHSM54M(DG)-BH-395	Mono	1500	37	30	13,428523	395	IEC61215-1:2016 IEC61215-2:2016
CHSM54M(DG)-BH-400	Mono	1500	37,2	30	13,542428	400	IEC61215-1:2016 IEC61215-2:2016
CHSM54M(DG)-BH-405	Mono	1500	37,4	30	13,655583	405	IEC61215-1:2016 IEC61215-2:2016
CHSM54M(DG)/F-BH-390	Mono	1500	36,8	30	13,330599	390	IEC61215-1:2016 IEC61215-2:2016
CHSM54M(DG)/F-BH-395	Mono	1500	37	30	13,428523	395	IEC61215-1:2016 IEC61215-2:2016
CHSM54M(DG)/F-BH-400	Mono	1500	37,2	30	13,542428	400	IEC61215-1:2016 IEC61215-2:2016
CHSM54M(DG)/F-BH-405	Mono	1500	37,4	30	13,655583	405	IEC61215-1:2016 IEC61215-2:2016
CHSM6612M/HV-330	Mono	1500	45,89	15	9,29	330	IEC61215-1:2016 IEC61215-2:2016
CHSM6612M/HV-335	Mono	1500	45,98	15	9,38	335	IEC61215-1:2016 IEC61215-2:2016
CHSM6612M/HV-340	Mono	1500	46,38	15	9,41	340	IEC61215-1:2016 IEC61215-2:2016

Fecha de Emisión: 2019-12-12
 Fecha de Vencimiento: 2022-12-12
 Versión 7; 2021-12-16

Página 22 de 46



This document cancels and supersedes the last version of this certificate number issued by SGS Colombia S.A.S.

Any complaint, appeal or enquiry about the validity of this certificate/report may be sent to so.servicioalcliente@sgs.com, via phone No. 7422274 ext. 13602 and its validity can be checked at <https://www.sgs.com/en/certified-clients-and-products>

This document is issued by the Company under its General Conditions of Service accessible at <http://www.sgs.com/terms-and-conditions.html>. Attention is drawn to the limitation of liability, indemnification and jurisdiction issues defined therein.

Any holder of this document is advised that information contained herein reflects the Company's findings at the time of its intervention only and within the limits of Client's instructions, if any. The Company's sole responsibility is to its Client and this document does not exonerate parties to a transaction from exercising all their rights and obligations under the transaction documents. Any unauthorized alteration, forgery or falsification of the content or appearance of this document is unlawful and offenders may be prosecuted to the fullest extent of the law.

CRS-C-06-05 V.4 junio 2019





SGS COLOMBIA S.A.S.
CRS-F490101
ORDEN No. 4200-33938
CERTIFICADO No. CRS15121
ORDEN CERT. No. CO-CERT191201757-08
CERTIFICADO DE CONFORMIDAD DE PRODUCTO
Chint Solar (Zhejiang) Co., Ltd.
Building 1, No. 1355, Bin'an Road, Binjiang District, Hangzhou, 310052, Zhejiang, China

Referencia	Tipo	Tensión Máxima Del Sistema (V)	Tensión En Circuito Abierto (V)	Corriente Nominal (A)	Corriente De Cortocircuito (A)	Potencia Máxima Del Módulo (W)	Estándar De Ensayo
CHSM6612M/HV-345	Mono	1500	46.70	15	9.48	345	IEC61215-1:2016 IEC61215-2:2016
CHSM6612M/HV-350	Mono	1500	47.01	15	9.53	350	IEC61215-1:2016 IEC61215-2:2016
CHSM6612M/HV-355	Mono	1500	47.31	15	9.60	355	IEC61215-1:2016 IEC61215-2:2016
CHSM6612M/HV-360	Mono	1500	47.62	20	9.66	360	IEC61215-1:2016 IEC61215-2:2016
CHSM6612M/HV-365	Mono	1500	47.82	20	9.75	365	IEC61215-1:2016 IEC61215-2:2016
CHSM6612M/HV-370	Mono	1500	48.36	20	9.91	370	IEC61215-1:2016 IEC61215-2:2016
CHSM6612M/HV-375	Mono	1500	48.45	20	9.94	375	IEC61215-1:2016 IEC61215-2:2016
CHSM6612M/HV-380	Mono	1500	48.61	20	9.99	380	IEC61215-1:2016 IEC61215-2:2016
CHSM6612M/HV-385	Mono	1500	48.78	20	10.04	385	IEC61215-1:2016 IEC61215-2:2016
CHSM6612M/HV-390	Mono	1500	48.94	20	10.09	390	IEC61215-1:2016 IEC61215-2:2016
CHSM6612M/HV-395	Mono	1500	49.10	20	10.14	395	IEC61215-1:2016 IEC61215-2:2016
CHSM6612M/HV-400	Mono	1500	49.26	20	10.19	400	IEC61215-1:2016 IEC61215-2:2016
CHSM6612M/HV-405	Mono	1500	49.43	20	10.24	405	IEC61215-1:2016 IEC61215-2:2016

Fecha de Emisión: 2019-12-12
 Fecha de Vencimiento: 2022-12-12
 Versión 7; 2021-12-16

Página 23 de 46



This document cancels and supersedes the last version of this certificate number issued by SGS Colombia S.A.S.

Any complaint, appeal or enquiry about the validity of this certificate/report may be sent to so.servicioalcliente@sgs.com, via phone No. 7422274 ext. 13602 and its validity can be checked at <https://www.sgs.com/en/certified-clients-and-products>

This document is issued by the Company under its General Conditions of Service accessible at <http://www.sgs.com/terms-and-conditions.html>. Attention is drawn to the limitation of liability, indemnification and jurisdiction issues defined therein.

Any holder of this document is advised that information contained herein reflects the Company's findings at the time of its intervention only and within the limits of Client's instructions, if any. The Company's sole responsibility is to its Client and this document does not exonerate parties to a transaction from exercising all their rights and obligations under the transaction documents. Any unauthorized alteration, forgery or falsification of the content or appearance of this document is unlawful and offenders may be prosecuted to the fullest extent of the law.

CRS-C-06-05 V.4 junio 2019





SGS COLOMBIA S.A.S.
CRS-F490101
ORDEN No. 4200-33938
CERTIFICADO No. CRS15121
ORDEN CERT. No. CO-CERT191201757-08
CERTIFICADO DE CONFORMIDAD DE PRODUCTO
Chint Solar (Zhejiang) Co., Ltd.
Building 1, No. 1355, Bin'an Road, Binjiang District, Hangzhou, 310052, Zhejiang, China

Referencia	Tipo	Tensión Máxima Del Sistema (V)	Tensión En Circuito Abierto (V)	Corriente Nominal (A)	Corriente De Cortocircuito (A)	Potencia Máxima Del Módulo (W)	Estándar De Ensayo
CHSM6610M/HV-275	Mono	1500	38,36	15	9,38	275	IEC61215-1:2016 IEC61215-2:2016
CHSM6610M/HV-280	Mono	1500	38,83	15	9,41	280	IEC61215-1:2016 IEC61215-2:2016
CHSM6610M/HV-285	Mono	1500	39,15	15	9,46	285	IEC61215-1:2016 IEC61215-2:2016
CHSM6610M/HV-290	Mono	1500	39,45	15	9,54	290	IEC61215-1:2016 IEC61215-2:2016
CHSM6610M/HV-295	Mono	1500	39,81	15	9,59	295	IEC61215-1:2016 IEC61215-2:2016
CHSM6610M/HV-300	Mono	1500	39,90	20	9,68	300	IEC61215-1:2016 IEC61215-2:2016
CHSM6610M/HV-305	Mono	1500	40,05	20	9,72	305	IEC61215-1:2016 IEC61215-2:2016
CHSM6610M/HV-310	Mono	1500	40,18	20	9,86	310	IEC61215-1:2016 IEC61215-2:2016
CHSM6610M/HV-315	Mono	1500	40,33	20	9,98	315	IEC61215-1:2016 IEC61215-2:2016
CHSM6610M/HV-320	Mono	1500	40,48	20	10,05	320	IEC61215-1:2016 IEC61215-2:2016
CHSM6610M/HV-325	Mono	1500	40,63	20	10,12	325	IEC61215-1:2016 IEC61215-2:2016
CHSM6610M/HV-330	Mono	1500	40,78	20	10,22	330	IEC61215-1:2016 IEC61215-2:2016
CHSM6610M/HV-335	Mono	1500	40,93	20	10,3	335	IEC61215-1:2016 IEC61215-2:2016

Fecha de Emisión: 2019-12-12
 Fecha de Vencimiento: 2022-12-12
 Versión 7; 2021-12-16

Página 24 de 46



This document cancels and supersedes the last version of this certificate number issued by SGS Colombia S.A.S.

Any complaint, appeal or enquiry about the validity of this certificate/report may be sent to so.servicioalcliente@sgs.com, via phone No. 7422274 ext. 13602 and its validity can be checked at <https://www.sgs.com/en/certified-clients-and-products>

This document is issued by the Company under its General Conditions of Service accessible at <http://www.sgs.com/terms-and-conditions.htm>. Attention is drawn to the limitation of liability, indemnification and jurisdiction issues defined therein.

Any holder of this document is advised that information contained herein reflects the Company's findings at the time of its intervention only and within the limits of Client's instructions, if any. The Company's sole responsibility is to its Client and this document does not exonerate parties to a transaction from exercising all their rights and obligations under the transaction documents. Any unauthorized alteration, forgery or falsification of the content or appearance of this document is unlawful and offenders may be prosecuted to the fullest extent of the law.

CRS-C-06-05 V.4 junio 2019





SGS COLOMBIA S.A.S.
CRS-F490101
ORDEN No. 4200-33938
CERTIFICADO No. CRS15121
ORDEN CERT. No. CO-CERT191201757-08
CERTIFICADO DE CONFORMIDAD DE PRODUCTO
Chint Solar (Zhejiang) Co., Ltd.
Building 1, No. 1355, Bin'an Road, Binjiang District, Hangzhou, 310052, Zhejiang, China

Referencia	Tipo	Tensión Máxima Del Sistema (V)	Tensión En Circuito Abierto (V)	Corriente Nominal (A)	Corriente De Cortocircuito (A)	Potencia Máxima Del Módulo (W)	Estándar De Ensayo
CHSM72M-HC-330	Mono	1500	45.30	15	9.30	330	IEC61215-1:2016 IEC61215-2:2016
CHSM72M-HC-335	Mono	1500	45.61	15	9.36	335	IEC61215-1:2016 IEC61215-2:2016
CHSM72M-HC-340	Mono	1500	45.91	15	9.41	340	IEC61215-1:2016 IEC61215-2:2016
CHSM72M-HC-345	Mono	1500	46.21	15	9.46	345	IEC61215-1:2016 IEC61215-2:2016
CHSM72M-HC-350	Mono	1500	46.52	15	9.52	350	IEC61215-1:2016 IEC61215-2:2016
CHSM72M-HC-355	Mono	1500	46.83	15	9.57	355	IEC61215-1:2016 IEC61215-2:2016
CHSM72M-HC-360	Mono	1500	47.13	20	9.64	360	IEC61215-1:2016 IEC61215-2:2016
CHSM72M-HC-365	Mono	1500	47.44	20	9.71	365	IEC61215-1:2016 IEC61215-2:2016
CHSM72M-HC-370	Mono	1500	47.64	20	9.80	370	IEC61215-1:2016 IEC61215-2:2016
CHSM72M-HC-375	Mono	1500	47.89	20	9.88	375	IEC61215-1:2016 IEC61215-2:2016
CHSM72M-HC-380	Mono	1500	48.18	20	9.95	380	IEC61215-1:2016 IEC61215-2:2016
CHSM72M-HC-385	Mono	1500	48.47	20	10.02	385	IEC61215-1:2016 IEC61215-2:2016
CHSM72M-HC-390	Mono	1500	48.70	20	10.10	390	IEC61215-1:2016 IEC61215-2:2016

Fecha de Emisión: 2019-12-12
 Fecha de Vencimiento: 2022-12-12
 Versión 7; 2021-12-16

Página 25 de 46



This document cancels and supersedes the last version of this certificate number issued by SGS Colombia S.A.S.

Any complaint, appeal or enquiry about the validity of this certificate/report may be sent to so.servicioalcliente@sgs.com, via phone No. 7422274 ext. 13602 and its validity can be checked at <https://www.sgs.com/en/certified-clients-and-products>

This document is issued by the Company under its General Conditions of Service accessible at <http://www.sgs.com/terms-and-conditions.html>. Attention is drawn to the limitation of liability, indemnification and jurisdiction issues defined therein.

Any holder of this document is advised that information contained herein reflects the Company's findings at the time of its intervention only and within the limits of Client's instructions, if any. The Company's sole responsibility is to its Client and this document does not exonerate parties to a transaction from exercising all their rights and obligations under the transaction documents. Any unauthorized alteration, forgery or falsification of the content or appearance of this document is unlawful and offenders may be prosecuted to the fullest extent of the law.

CRS-C-06-05 V.4 junio 2019





SGS COLOMBIA S.A.S.

CRS-F490101

ORDEN No. 4200-33938

CERTIFICADO No. CRS15121

ORDEN CERT. No. CO-CERT191201757-08

CERTIFICADO DE CONFORMIDAD DE PRODUCTO

Chint Solar (Zhejiang) Co., Ltd.

Building 1, No. 1355, Bin'an Road, Binjiang District, Hangzhou, 310052, Zhejiang, China

Referencia	Tipo	Tensión Máxima Del Sistema (V)	Tensión En Circuito Abierto (V)	Corriente Nominal (A)	Corriente De Cortocircuito (A)	Potencia Máxima Del Módulo (W)	Estándar De Ensayo
CHSM72M-HC-395	Mono	1500	48.98	20	10.17	395	IEC61215-1:2016 IEC61215-2:2016
CHSM72M-HC-400	Mono	1500	49.25	20	10.24	400	IEC61215-1:2016 IEC61215-2:2016
CHSM72M-HC-405	Mono	1500	49.53	20	10.31	405	IEC61215-1:2016 IEC61215-2:2016
CHSM72M-HC-410	Mono	1500	49.80	20	10.38	410	IEC61215-1:2016 IEC61215-2:2016
CHSM72M-HC-415	Mono	1500	50.06	20	10.45	415	IEC61215-1:2016 IEC61215-2:2016
CHSM72M-HC-420	Mono	1500	50.32	20	10.52	420	IEC61215-1:2016 IEC61215-2:2016
CHSM72M-HC-425	Mono	1500	47.73	20	11.03	425	IEC61215-1:2016 IEC61215-2:2016
CHSM72M-HC-430	Mono	1500	47.99	20	11.10	430	IEC61215-1:2016 IEC61215-2:2016
CHSM72M-HC-435	Mono	1500	48.25	20	11.16	435	IEC61215-1:2016 IEC61215-2:2016
CHSM72M-HC-440	Mono	1500	48.50	20	11.24	440	IEC61215-1:2016 IEC61215-2:2016
CHSM72M-HC-445	Mono	1500	48.80	20	11.30	445	IEC61215-1:2016 IEC61215-2:2016
CHSM72M-HC-450	Mono	1500	49.05	20	11.37	450	IEC61215-1:2016 IEC61215-2:2016
CHSM72M-HC-455	Mono	1500	49.35	20	11.44	455	IEC61215-1:2016 IEC61215-2:2016

Fecha de Emisión: 2019-12-12

Fecha de Vencimiento: 2022-12-12

Versión 7; 2021-12-16

Página 26 de 46



This document cancels and supersedes the last version of this certificate number issued by SGS Colombia S.A.S.

Any complaint, appeal or enquiry about the validity of this certificate/report may be sent to so.servicioalcliente@sgs.com, via phone No. 7422274 ext. 13602 and its validity can be checked at <https://www.sgs.com/en/certified-clients-and-products>

This document is issued by the Company under its General Conditions of Service accessible at <http://www.sgs.com/terms-and-conditions.htm>. Attention is drawn to the limitation of liability, indemnification and jurisdiction issues defined therein.

Any holder of this document is advised that information contained herein reflects the Company's findings at the time of its intervention only and within the limits of Client's instructions, if any. The Company's sole responsibility is to its Client and this document does not exonerate parties to a transaction from exercising all their rights and obligations under the transaction documents. Any unauthorized alteration, forgery or falsification of the content or appearance of this document is unlawful and offenders may be prosecuted to the fullest extent of the law.

CRS-C-06-05 V.4 junio 2019





SGS COLOMBIA S.A.S.
CRS-F490101
ORDEN No. 4200-33938
CERTIFICADO No. CRS15121
ORDEN CERT. No. CO-CERT191201757-08
CERTIFICADO DE CONFORMIDAD DE PRODUCTO
Chint Solar (Zhejiang) Co., Ltd.
Building 1, No. 1355, Bin'an Road, Binjiang District, Hangzhou, 310052, Zhejiang, China

Referencia	Tipo	Tensión Máxima Del Sistema (V)	Tensión En Circuito Abierto (V)	Corriente Nominal (A)	Corriente De Cortocircuito (A)	Potencia Máxima Del Módulo (W)	Estándar De Ensayo
CHSM72M-HC-520	Mono	1500	48,9	25	13,34	520	IEC61215-1:2016 IEC61215-2:2016
CHSM72M-HC-525	Mono	1500	49,1	25	13,43	525	IEC61215-1:2016 IEC61215-2:2016
CHSM72M-HC-530	Mono	1500	49,3	25	13,52	530	IEC61215-1:2016 IEC61215-2:2016
CHSM72M-HC-535	Mono	1500	49,5	25	13,61	535	IEC61215-1:2016 IEC61215-2:2016
CHSM72M-HC-540	Mono	1500	49,7	25	13,72	540	IEC61215-1:2016 IEC61215-2:2016
CHSM72M-HC-545	Mono	1500	49,9	25	13,81	545	IEC61215-1:2016 IEC61215-2:2016
CHSM72M-HC-550	Mono	1500	50,1	25	13,9	550	IEC61215-1:2016 IEC61215-2:2016
CHSM60M-HC-275	Mono	1500	38,18	15	9,28	275	IEC61215-1:2016 IEC61215-2:2016
CHSM60M-HC-280	Mono	1500	38,50	15	9,36	280	IEC61215-1:2016 IEC61215-2:2016
CHSM60M-HC-285	Mono	1500	38,79	15	9,43	285	IEC61215-1:2016 IEC61215-2:2016
CHSM60M-HC-290	Mono	1500	39,09	15	9,51	290	IEC61215-1:2016 IEC61215-2:2016
CHSM60M-HC-295	Mono	1500	39,39	15	9,59	295	IEC61215-1:2016 IEC61215-2:2016
CHSM60M-HC-300	Mono	1500	39,75	20	9,64	300	IEC61215-1:2016 IEC61215-2:2016

Fecha de Emisión: 2019-12-12
 Fecha de Vencimiento: 2022-12-12
 Versión 7; 2021-12-16

Página 27 de 46



This document cancels and supersedes the last version of this certificate number issued by SGS Colombia S.A.S.

Any complaint, appeal or enquiry about the validity of this certificate/report may be sent to so.servicioalcliente@sgs.com, via phone No. 7422274 ext. 13602 and its validity can be checked at <https://www.sgs.com/en/certified-clients-and-products>

This document is issued by the Company under its General Conditions of Service accessible at <http://www.sgs.com/terms-and-conditions.html>. Attention is drawn to the limitation of liability, indemnification and jurisdiction issues defined therein.

Any holder of this document is advised that information contained herein reflects the Company's findings at the time of its intervention only and within the limits of Client's instructions, if any. The Company's sole responsibility is to its Client and this document does not exonerate parties to a transaction from exercising all their rights and obligations under the transaction documents. Any unauthorized alteration, forgery or falsification of the content or appearance of this document is unlawful and offenders may be prosecuted to the fullest extent of the law.

CRS-C-06-05 V.4 junio 2019





SGS COLOMBIA S.A.S.
CRS-F490101
ORDEN No. 4200-33938
CERTIFICADO No. CRS15121
ORDEN CERT. No. CO-CERT191201757-08
CERTIFICADO DE CONFORMIDAD DE PRODUCTO
Chint Solar (Zhejiang) Co., Ltd.
Building 1, No. 1355, Bin'an Road, Binjiang District, Hangzhou, 310052, Zhejiang, China

Referencia	Tipo	Tensión Máxima Del Sistema (V)	Tensión En Circuito Abierto (V)	Corriente Nominal (A)	Corriente De Cortocircuito (A)	Potencia Máxima Del Módulo (W)	Estándar De Ensayo
CHSM60M-HC-305	Mono	1500	39,84	20	9,73	305	IEC61215-1:2016 IEC61215-2:2016
CHSM60M-HC-310	Mono	1500	40,11	20	9,82	310	IEC61215-1:2016 IEC61215-2:2016
CHSM60M-HC-315	Mono	1500	40,42	20	9,90	315	IEC61215-1:2016 IEC61215-2:2016
CHSM60M-HC-320	Mono	1500	40,72	20	9,98	320	IEC61215-1:2016 IEC61215-2:2016
CHSM60M-HC-325	Mono	1500	41,03	20	10,06	325	IEC61215-1:2016 IEC61215-2:2016
CHSM60M-HC-330	Mono	1500	41,32	20	10,14	330	IEC61215-1:2016 IEC61215-2:2016
CHSM60M-HC-335	Mono	1500	41,61	20	10,22	335	IEC61215-1:2016 IEC61215-2:2016
CHSM60M-HC-340	Mono	1500	41,88	20	10,30	340	IEC61215-1:2016 IEC61215-2:2016
CHSM60M-HC-345	Mono	1500	42,16	20	10,38	345	IEC61215-1:2016 IEC61215-2:2016
CHSM60M-HC-350	Mono	1500	42,44	20	10,46	350	IEC61215-1:2016 IEC61215-2:2016
CHSM60M-HC-355	Mono	1500	39,80	20	11,15	355	IEC61215-1:2016 IEC61215-2:2016
CHSM60M-HC-360	Mono	1500	40,14	20	11,21	360	IEC61215-1:2016 IEC61215-2:2016
CHSM60M-HC-365	Mono	1500	40,41	20	11,29	365	IEC61215-1:2016 IEC61215-2:2016

Fecha de Emisión: 2019-12-12
 Fecha de Vencimiento: 2022-12-12
 Versión 7; 2021-12-16

Página 28 de 46



This document cancels and supersedes the last version of this certificate number issued by SGS Colombia S.A.S.

Any complaint, appeal or enquiry about the validity of this certificate/report may be sent to so.servicioalcliente@sgs.com, via phone No. 7422274 ext. 13602 and its validity can be checked at <https://www.sgs.com/en/certified-clients-and-products>

This document is issued by the Company under its General Conditions of Service accessible at <http://www.sgs.com/terms-and-conditions.htm>. Attention is drawn to the limitation of liability, indemnification and jurisdiction issues defined therein.

Any holder of this document is advised that information contained herein reflects the Company's findings at the time of its intervention only and within the limits of Client's instructions, if any. The Company's sole responsibility is to its Client and this document does not exonerate parties to a transaction from exercising all their rights and obligations under the transaction documents. Any unauthorized alteration, forgery or falsification of the content or appearance of this document is unlawful and offenders may be prosecuted to the fullest extent of the law.

CRS-C-06-05 V.4 junio 2019





SGS COLOMBIA S.A.S.
CRS-F490101
ORDEN No. 4200-33938
CERTIFICADO No. CRS15121
ORDEN CERT. No. CO-CERT191201757-08
CERTIFICADO DE CONFORMIDAD DE PRODUCTO
Chint Solar (Zhejiang) Co., Ltd.
Building 1, No. 1355, Bin'an Road, Binjiang District, Hangzhou, 310052, Zhejiang, China

Referencia	Tipo	Tensión Máxima Del Sistema (V)	Tensión En Circuito Abierto (V)	Corriente Nominal (A)	Corriente De Cortocircuito (A)	Potencia Máxima Del Módulo (W)	Estándar De Ensayo
CHSM60M-HC-370	Mono	1500	40,75	20	11,35	370	IEC61215-1:2016 IEC61215-2:2016
CHSM60M-HC-375	Mono	1500	41,05	20	11,42	375	IEC61215-1:2016 IEC61215-2:2016
CHSM60M-HC-380	Mono	1500	41,34	20	11,49	380	IEC61215-1:2016 IEC61215-2:2016
CHSM60M-HC-590	Mono	1500	41,1	30	18,42	590	IEC61215-1:2016 IEC61215-2:2016
CHSM60M-HC-595	Mono	1500	41,3	30	18,47	595	IEC61215-1:2016 IEC61215-2:2016
CHSM60M-HC-600	Mono	1500	41,5	30	18,52	600	IEC61215-1:2016 IEC61215-2:2016
CHSM60M-HC-605	Mono	1500	41,7	30	18,57	605	IEC61215-1:2016 IEC61215-2:2016
CHSM60M-HC-610	Mono	1500	41,9	30	18,62	610	IEC61215-1:2016 IEC61215-2:2016
CHSM66M-HC-395	Mono	1500	43,95	20	11,21	395	IEC61215-1:2016 IEC61215-2:2016
CHSM66M-HC-400	Mono	1500	44,27	20	11,27	400	IEC61215-1:2016 IEC61215-2:2016
CHSM66M-HC-405	Mono	1500	44,58	20	11,34	405	IEC61215-1:2016 IEC61215-2:2016
CHSM66M-HC-410	Mono	1500	44,89	20	11,41	410	IEC61215-1:2016 IEC61215-2:2016
CHSM66M-HC-415	Mono	1500	45,18	20	11,49	415	IEC61215-1:2016 IEC61215-2:2016

Fecha de Emisión: 2019-12-12
 Fecha de Vencimiento: 2022-12-12
 Versión 7; 2021-12-16

Página 29 de 46



This document cancels and supersedes the last version of this certificate number issued by SGS Colombia S.A.S.

Any complaint, appeal or enquiry about the validity of this certificate/report may be sent to so.servicioalcliente@sgs.com, via phone No. 7422274 ext. 13602 and its validity can be checked at <https://www.sgs.com/en/certified-clients-and-products>

This document is issued by the Company under its General Conditions of Service accessible at <http://www.sgs.com/terms-and-conditions.htm>. Attention is drawn to the limitation of liability, indemnification and jurisdiction issues defined therein.

Any holder of this document is advised that information contained herein reflects the Company's findings at the time of its intervention only and within the limits of Client's instructions, if any. The Company's sole responsibility is to its Client and this document does not exonerate parties to a transaction from exercising all their rights and obligations under the transaction documents. Any unauthorized alteration, forgery or falsification of the content or appearance of this document is unlawful and offenders may be prosecuted to the fullest extent of the law.

CRS-C-06-05 V.4 junio 2019





SGS COLOMBIA S.A.S.
CRS-F490101
ORDEN No. 4200-33938
CERTIFICADO No. CRS15121
ORDEN CERT. No. CO-CERT191201757-08
CERTIFICADO DE CONFORMIDAD DE PRODUCTO
Chint Solar (Zhejiang) Co., Ltd.
Building 1, No. 1355, Bin'an Road, Binjiang District, Hangzhou, 310052, Zhejiang, China

Referencia	Tipo	Tensión Máxima Del Sistema (V)	Tensión En Circuito Abierto (V)	Corriente Nominal (A)	Corriente De Cortocircuito (A)	Potencia Máxima Del Módulo (W)	Estándar De Ensayo
CHSM66M-HC-480	Mono	1500	44,98	25	13,41	480	IEC61215-1:2016 IEC61215-2:2016
CHSM66M-HC-485	Mono	1500	45,18	25	13,5	485	IEC61215-1:2016 IEC61215-2:2016
CHSM66M-HC-490	Mono	1500	45,38	25	13,6	490	IEC61215-1:2016 IEC61215-2:2016
CHSM66M-HC-495	Mono	1500	45,58	25	13,71	495	IEC61215-1:2016 IEC61215-2:2016
CHSM66M-HC-500	Mono	1500	45,78	25	13,81	500	IEC61215-1:2016 IEC61215-2:2016
CHSM66M-HC-645	Mono	1500	45,08	30	18,38	645	IEC61215-1:2016 IEC61215-2:2016
CHSM66M-HC-650	Mono	1500	45,28	30	18,43	650	IEC61215-1:2016 IEC61215-2:2016
CHSM66M-HC-655	Mono	1500	45,48	30	18,48	655	IEC61215-1:2016 IEC61215-2:2016
CHSM66M-HC-660	Mono	1500	45,68	30	18,53	660	IEC61215-1:2016 IEC61215-2:2016
CHSM66M-HC-665	Mono	1500	45,88	30	18,58	665	IEC61215-1:2016 IEC61215-2:2016
CHSM66M-HC-670	Mono	1500	46,08	30	18,63	670	IEC61215-1:2016 IEC61215-2:2016
CHSM66M-HC-675	Mono	1500	46,28	30	18,68	675	IEC61215-1:2016 IEC61215-2:2016
CHSM54M-HC-390	Mono	1500	36,6	25	13,403444	390	IEC61215-1:2016 IEC61215-2:2016

Fecha de Emisión: 2019-12-12
 Fecha de Vencimiento: 2022-12-12
 Versión 7; 2021-12-16

Página 30 de 46



This document cancels and supersedes the last version of this certificate number issued by SGS Colombia S.A.S.



Any complaint, appeal or enquiry about the validity of this certificate/report may be sent to so.servicioalcliente@sgs.com, via phone No. 7422274 ext. 13602 and its validity can be checked at <https://www.sgs.com/en/certified-clients-and-products>

This document is issued by the Company under its General Conditions of Service accessible at <http://www.sgs.com/terms-and-conditions.html>. Attention is drawn to the limitation of liability, indemnification and jurisdiction issues defined therein.

Any holder of this document is advised that information contained herein reflects the Company's findings at the time of its intervention only and within the limits of Client's instructions, if any. The Company's sole responsibility is to its Client and this document does not exonerate parties to a transaction from exercising all their rights and obligations under the transaction documents. Any unauthorized alteration, forgery or falsification of the content or appearance of this document is unlawful and offenders may be prosecuted to the fullest extent of the law.



SGS COLOMBIA S.A.S.
CRS-F490101
ORDEN No. 4200-33938
CERTIFICADO No. CRS15121
ORDEN CERT. No. CO-CERT191201757-08
CERTIFICADO DE CONFORMIDAD DE PRODUCTO
Chint Solar (Zhejiang) Co., Ltd.
Building 1, No. 1355, Bin'an Road, Binjiang District, Hangzhou, 310052, Zhejiang, China

Referencia	Tipo	Tensión Máxima Del Sistema (V)	Tensión En Circuito Abierto (V)	Corriente Nominal (A)	Corriente De Cortocircuito (A)	Potencia Máxima Del Módulo (W)	Estándar De Ensayo
CHSM54M-HC-395	Mono	1500	36.8	25	13,518508	395	IEC61215-1:2016 IEC61215-2:2016
CHSM54M-HC-400	Mono	1500	37	25	13,650014	400	IEC61215-1:2016 IEC61215-2:2016
CHSM54M-HC-405	Mono	1500	37.2	25	13,763713	405	IEC61215-1:2016 IEC61215-2:2016
CHSM54M-HC-410	Mono	1500	37.4	25	13,876667	410	IEC61215-1:2016 IEC61215-2:2016
CHSM6612M-330	Mono	1000	45.89	15	9.29	330	IEC61215-1:2016 IEC61215-2:2016
CHSM6612M-335	Mono	1000	45.98	15	9.38	335	IEC61215-1:2016 IEC61215-2:2016
CHSM6612M-340	Mono	1000	46.38	15	9.41	340	IEC61215-1:2016 IEC61215-2:2016
CHSM6612M-345	Mono	1000	46.70	15	9.48	345	IEC61215-1:2016 IEC61215-2:2016
CHSM6612M-350	Mono	1000	47.01	15	9.53	350	IEC61215-1:2016 IEC61215-2:2016
CHSM6612M-355	Mono	1000	47.31	15	9.60	355	IEC61215-1:2016 IEC61215-2:2016
CHSM6612M-360	Mono	1000	47.62	20	9.66	360	IEC61215-1:2016 IEC61215-2:2016
CHSM6612M-365	Mono	1000	47.82	20	9.75	365	IEC61215-1:2016 IEC61215-2:2016
CHSM6612M-370	Mono	1000	48.36	20	9.91	370	IEC61215-1:2016 IEC61215-2:2016

Fecha de Emisión: 2019-12-12
 Fecha de Vencimiento: 2022-12-12
 Versión 7; 2021-12-16

Página 31 de 46



This document cancels and supersedes the last version of this certificate number issued by SGS Colombia S.A.S.

Any complaint, appeal or enquiry about the validity of this certificate/report may be sent to so.servicioalcliente@sgs.com, via phone No. 7422274 ext. 13602 and its validity can be checked at <https://www.sgs.com/en/certified-clients-and-products>

This document is issued by the Company under its General Conditions of Service accessible at <http://www.sgs.com/terms-and-conditions.html>. Attention is drawn to the limitation of liability, indemnification and jurisdiction issues defined therein.

Any holder of this document is advised that information contained herein reflects the Company's findings at the time of its intervention only and within the limits of Client's instructions, if any. The Company's sole responsibility is to its Client and this document does not exonerate parties to a transaction from exercising all their rights and obligations under the transaction documents. Any unauthorized alteration, forgery or falsification of the content or appearance of this document is unlawful and offenders may be prosecuted to the fullest extent of the law.

CRS-C-06-05 V.4 junio 2019





SGS COLOMBIA S.A.S.
CRS-F490101
ORDEN No. 4200-33938
CERTIFICADO No. CRS15121
ORDEN CERT. No. CO-CERT191201757-08
CERTIFICADO DE CONFORMIDAD DE PRODUCTO
Chint Solar (Zhejiang) Co., Ltd.
Building 1, No. 1355, Bin'an Road, Binjiang District, Hangzhou, 310052, Zhejiang, China

Referencia	Tipo	Tensión Máxima Del Sistema (V)	Tensión En Circuito Abierto (V)	Corriente Nominal (A)	Corriente De Cortocircuito (A)	Potencia Máxima Del Módulo (W)	Estándar De Ensayo
CHSM6612M-375	Mono	1000	48,45	20	9,94	375	IEC61215-1:2016 IEC61215-2:2016
CHSM6612M-380	Mono	1000	48,61	20	9,99	380	IEC61215-1:2016 IEC61215-2:2016
CHSM6612M-385	Mono	1000	48,78	20	10,04	385	IEC61215-1:2016 IEC61215-2:2016
CHSM6612M-390	Mono	1000	48,94	20	10,09	390	IEC61215-1:2016 IEC61215-2:2016
CHSM6612M-395	Mono	1000	49,10	20	10,14	395	IEC61215-1:2016 IEC61215-2:2016
CHSM6612M-400	Mono	1000	49,26	20	10,19	400	IEC61215-1:2016 IEC61215-2:2016
CHSM6612M-405	Mono	1000	49,43	20	10,24	405	IEC61215-1:2016 IEC61215-2:2016
CHSM6612M(BL)-330	Mono	1000	45,89	15	9,29	330	IEC61215-1:2016 IEC61215-2:2016
CHSM6612M(BL)-335	Mono	1000	45,98	15	9,38	335	IEC61215-1:2016 IEC61215-2:2016
CHSM6612M(BL)-340	Mono	1000	46,38	15	9,41	340	IEC61215-1:2016 IEC61215-2:2016
CHSM6612M(BL)-345	Mono	1000	46,70	15	9,48	345	IEC61215-1:2016 IEC61215-2:2016
CHSM6612M(BL)-350	Mono	1000	47,01	15	9,53	350	IEC61215-1:2016 IEC61215-2:2016
CHSM6612M(BL)-355	Mono	1000	47,31	15	9,60	355	IEC61215-1:2016 IEC61215-2:2016

Fecha de Emisión: 2019-12-12
 Fecha de Vencimiento: 2022-12-12
 Versión 7; 2021-12-16

Página 32 de 46



This document cancels and supersedes the last version of this certificate number issued by SGS Colombia S.A.S.

Any complaint, appeal or enquiry about the validity of this certificate/report may be sent to so.servicioalcliente@sgs.com, via phone No. 7422274 ext. 13602 and its validity can be checked at <https://www.sgs.com/en/certified-clients-and-products>

This document is issued by the Company under its General Conditions of Service accessible at <http://www.sgs.com/terms-and-conditions.htm>. Attention is drawn to the limitation of liability, indemnification and jurisdiction issues defined therein.

Any holder of this document is advised that information contained herein reflects the Company's findings at the time of its intervention only and within the limits of Client's instructions, if any. The Company's sole responsibility is to its Client and this document does not exonerate parties to a transaction from exercising all their rights and obligations under the transaction documents. Any unauthorized alteration, forgery or falsification of the content or appearance of this document is unlawful and offenders may be prosecuted to the fullest extent of the law.

CRS-C-06-05 V.4 junio 2019





SGS COLOMBIA S.A.S.
CRS-F490101
ORDEN No. 4200-33938
CERTIFICADO No. CRS15121
ORDEN CERT. No. CO-CERT191201757-08
CERTIFICADO DE CONFORMIDAD DE PRODUCTO
Chint Solar (Zhejiang) Co., Ltd.
Building 1, No. 1355, Bin'an Road, Binjiang District, Hangzhou, 310052, Zhejiang, China

Referencia	Tipo	Tensión Máxima Del Sistema (V)	Tensión En Circuito Abierto (V)	Corriente Nominal (A)	Corriente De Cortocircuito (A)	Potencia Máxima Del Módulo (W)	Estándar De Ensayo
CHSM6612M(BL)-360	Mono	1000	47.62	20	9.66	360	IEC61215-1:2016 IEC61215-2:2016
CHSM6612M(BL)-365	Mono	1000	47.82	20	9.75	365	IEC61215-1:2016 IEC61215-2:2016
CHSM6612M(BL)-370	Mono	1000	48.36	20	9.91	370	IEC61215-1:2016 IEC61215-2:2016
CHSM6612M(BL)-375	Mono	1000	48.45	20	9.94	375	IEC61215-1:2016 IEC61215-2:2016
CHSM6612M(BL)-380	Mono	1000	48.61	20	9.99	380	IEC61215-1:2016 IEC61215-2:2016
CHSM6612M(BL)-385	Mono	1000	48.78	20	10.04	385	IEC61215-1:2016 IEC61215-2:2016
CHSM6612M(BL)-390	Mono	1000	48.94	20	10.09	390	IEC61215-1:2016 IEC61215-2:2016
CHSM6612M(BL)-395	Mono	1000	49.10	20	10.14	395	IEC61215-1:2016 IEC61215-2:2016
CHSM6612M(BL)-400	Mono	1000	49.26	20	10.19	400	IEC61215-1:2016 IEC61215-2:2016
CHSM6612M(BL)-405	Mono	1000	49.43	20	10.24	405	IEC61215-1:2016 IEC61215-2:2016
CHSM6610M-275	Mono	1000	38.36	15	9.38	275	IEC61215-1:2016 IEC61215-2:2016
CHSM6610M-280	Mono	1000	38.83	15	9.41	280	IEC61215-1:2016 IEC61215-2:2016
CHSM6610M-285	Mono	1000	39.15	15	9.46	285	IEC61215-1:2016 IEC61215-2:2016

Fecha de Emisión: 2019-12-12
 Fecha de Vencimiento: 2022-12-12
 Versión 7; 2021-12-16

Página 33 de 46



This document cancels and supersedes the last version of this certificate number issued by SGS Colombia S.A.S.

Any complaint, appeal or enquiry about the validity of this certificate/report may be sent to so.servicioalcliente@sgs.com, via phone No. 7422274 ext. 13602 and its validity can be checked at <https://www.sgs.com/en/certified-clients-and-products>

This document is issued by the Company under its General Conditions of Service accessible at <http://www.sgs.com/terms-and-conditions.htm>. Attention is drawn to the limitation of liability, indemnification and jurisdiction issues defined therein.

Any holder of this document is advised that information contained herein reflects the Company's findings at the time of its intervention only and within the limits of Client's instructions, if any. The Company's sole responsibility is to its Client and this document does not exonerate parties to a transaction from exercising all their rights and obligations under the transaction documents. Any unauthorized alteration, forgery or falsification of the content or appearance of this document is unlawful and offenders may be prosecuted to the fullest extent of the law.

CRS-C-06-05 V.4 junio 2019





SGS COLOMBIA S.A.S.
CRS-F490101
ORDEN No. 4200-33938
CERTIFICADO No. CRS15121
ORDEN CERT. No. CO-CERT191201757-08
CERTIFICADO DE CONFORMIDAD DE PRODUCTO
Chint Solar (Zhejiang) Co., Ltd.
Building 1, No. 1355, Bin'an Road, Binjiang District, Hangzhou, 310052, Zhejiang, China

Referencia	Tipo	Tensión Máxima Del Sistema (V)	Tensión En Circuito Abierto (V)	Corriente Nominal (A)	Corriente De Cortocircuito (A)	Potencia Máxima Del Módulo (W)	Estándar De Ensayo
CHSM6610M-290	Mono	1000	39.45	15	9.54	290	IEC61215-1:2016 IEC61215-2:2016
CHSM6610M-295	Mono	1000	39.81	15	9.59	295	IEC61215-1:2016 IEC61215-2:2016
CHSM6610M-300	Mono	1000	39.90	20	9.68	300	IEC61215-1:2016 IEC61215-2:2016
CHSM6610M-305	Mono	1000	40.05	20	9.72	305	IEC61215-1:2016 IEC61215-2:2016
CHSM6610M-310	Mono	1000	40.18	20	9.86	310	IEC61215-1:2016 IEC61215-2:2016
CHSM6610M-315	Mono	1000	40.33	20	9.98	315	IEC61215-1:2016 IEC61215-2:2016
CHSM6610M-320	Mono	1000	40.48	20	10.05	320	IEC61215-1:2016 IEC61215-2:2016
CHSM6610M-325	Mono	1000	40.63	20	10.12	325	IEC61215-1:2016 IEC61215-2:2016
CHSM6610M-330	Mono	1000	40.78	20	10.22	330	IEC61215-1:2016 IEC61215-2:2016
CHSM6610M-335	Mono	1000	40.93	20	10.3	335	IEC61215-1:2016 IEC61215-2:2016
CHSM6610M(BL)-275	Mono	1000	38.36	15	9.38	275	IEC61215-1:2016 IEC61215-2:2016
CHSM6610M(BL)-280	Mono	1000	38.83	15	9.41	280	IEC61215-1:2016 IEC61215-2:2016
CHSM6610M(BL)-285	Mono	1000	39.15	15	9.46	285	IEC61215-1:2016 IEC61215-2:2016

Fecha de Emisión: 2019-12-12
 Fecha de Vencimiento: 2022-12-12
 Versión 7; 2021-12-16

Página 34 de 46



This document cancels and supersedes the last version of this certificate number issued by SGS Colombia S.A.S.

Any complaint, appeal or enquiry about the validity of this certificate/report may be sent to so.servicioalcliente@sgs.com, via phone No. 7422274 ext. 13602 and its validity can be checked at <https://www.sgs.com/en/certified-clients-and-products>

This document is issued by the Company under its General Conditions of Service accessible at <http://www.sgs.com/terms-and-conditions.htm>. Attention is drawn to the limitation of liability, indemnification and jurisdiction issues defined therein.

Any holder of this document is advised that information contained herein reflects the Company's findings at the time of its intervention only and within the limits of Client's instructions, if any. The Company's sole responsibility is to its Client and this document does not exonerate parties to a transaction from exercising all their rights and obligations under the transaction documents. Any unauthorized alteration, forgery or falsification of the content or appearance of this document is unlawful and offenders may be prosecuted to the fullest extent of the law.

CRS-C-06-05 V.4 junio 2019





SGS COLOMBIA S.A.S.

CRS-F490101

ORDEN No. 4200-33938

CERTIFICADO No. CRS15121

ORDEN CERT. No. CO-CERT191201757-08

CERTIFICADO DE CONFORMIDAD DE PRODUCTO

Chint Solar (Zhejiang) Co., Ltd.

Building 1, No. 1355, Bin'an Road, Binjiang District, Hangzhou, 310052, Zhejiang, China

Referencia	Tipo	Tensión Máxima Del Sistema (V)	Tensión En Circuito Abierto (V)	Corriente Nominal (A)	Corriente De Cortocircuito (A)	Potencia Máxima Del Módulo (W)	Estándar De Ensayo
CHSM6610M(BL)-290	Mono	1000	39.45	15	9.54	290	IEC61215-1:2016 IEC61215-2:2016
CHSM6610M(BL)-295	Mono	1000	39.81	15	9.59	295	IEC61215-1:2016 IEC61215-2:2016
CHSM6610M(BL)-300	Mono	1000	39.90	20	9.68	300	IEC61215-1:2016 IEC61215-2:2016
CHSM6610M(BL)-305	Mono	1000	40.05	20	9.72	305	IEC61215-1:2016 IEC61215-2:2016
CHSM6610M(BL)-310	Mono	1000	40.18	20	9.86	310	IEC61215-1:2016 IEC61215-2:2016
CHSM6610M(BL)-315	Mono	1000	40.33	20	9.98	315	IEC61215-1:2016 IEC61215-2:2016
CHSM6610M(BL)-320	Mono	1000	40.48	20	10.05	320	IEC61215-1:2016 IEC61215-2:2016
CHSM6610M(BL)-325	Mono	1000	40.63	20	10.12	325	IEC61215-1:2016 IEC61215-2:2016
CHSM6610M(BL)-330	Mono	1000	40.78	20	10.22	330	IEC61215-1:2016 IEC61215-2:2016
CHSM6610M(BL)-335	Mono	1000	40.93	20	10.3	335	IEC61215-1:2016 IEC61215-2:2016
CHSM72M(BL)-HC-330	Mono	1000	45.3	15	9.3	330	IEC61215-1:2016 IEC61215-2:2016
CHSM72M(BL)-HC-335	Mono	1000	45.61	15	9.36	335	IEC61215-1:2016 IEC61215-2:2016
CHSM72M(BL)-HC-340	Mono	1000	45.91	15	9.41	340	IEC61215-1:2016 IEC61215-2:2016

Fecha de Emisión: 2019-12-12

Fecha de Vencimiento: 2022-12-12

Versión 7; 2021-12-16

Página 35 de 46



This document cancels and supersedes the last version of this certificate number issued by SGS Colombia S.A.S.

Any complaint, appeal or enquiry about the validity of this certificate/report may be sent to so.servicioalcliente@sgs.com, via phone No. 7422274 ext. 13602 and its validity can be checked at <https://www.sgs.com/en/certified-clients-and-products>

This document is issued by the Company under its General Conditions of Service accessible at <http://www.sgs.com/terms-and-conditions.html>. Attention is drawn to the limitation of liability, indemnification and jurisdiction issues defined therein.

Any holder of this document is advised that information contained herein reflects the Company's findings at the time of its intervention only and within the limits of Client's instructions, if any. The Company's sole responsibility is to its Client and this document does not exonerate parties to a transaction from exercising all their rights and obligations under the transaction documents. Any unauthorized alteration, forgery or falsification of the content or appearance of this document is unlawful and offenders may be prosecuted to the fullest extent of the law.

CRS-C-06-05 V.4 junio 2019





SGS COLOMBIA S.A.S.
CRS-F490101
ORDEN No. 4200-33938
CERTIFICADO No. CRS15121
ORDEN CERT. No. CO-CERT191201757-08
CERTIFICADO DE CONFORMIDAD DE PRODUCTO
Chint Solar (Zhejiang) Co., Ltd.
Building 1, No. 1355, Bin'an Road, Binjiang District, Hangzhou, 310052, Zhejiang, China

Referencia	Tipo	Tensión Máxima Del Sistema (V)	Tensión En Circuito Abierto (V)	Corriente Nominal (A)	Corriente De Cortocircuito (A)	Potencia Máxima Del Módulo (W)	Estándar De Ensayo
CHSM72M(BL)-HC-345	Mono	1000	46,21	15	9,46	345	IEC61215-1:2016 IEC61215-2:2016
CHSM72M(BL)-HC-350	Mono	1000	46,52	15	9,52	350	IEC61215-1:2016 IEC61215-2:2016
CHSM72M(BL)-HC-355	Mono	1000	46,83	15	9,57	355	IEC61215-1:2016 IEC61215-2:2016
CHSM72M(BL)-HC-360	Mono	1000	47,13	20	9,64	360	IEC61215-1:2016 IEC61215-2:2016
CHSM72M(BL)-HC-365	Mono	1000	47,44	20	9,71	365	IEC61215-1:2016 IEC61215-2:2016
CHSM72M(BL)-HC-370	Mono	1000	47,64	20	9,8	370	IEC61215-1:2016 IEC61215-2:2016
CHSM72M(BL)-HC-375	Mono	1000	47,89	20	9,88	375	IEC61215-1:2016 IEC61215-2:2016
CHSM72M(BL)-HC-380	Mono	1000	48,18	20	9,95	380	IEC61215-1:2016 IEC61215-2:2016
CHSM72M(BL)-HC-385	Mono	1000	48,47	20	10,02	385	IEC61215-1:2016 IEC61215-2:2016
CHSM72M(BL)-HC-390	Mono	1000	48,7	20	10,1	390	IEC61215-1:2016 IEC61215-2:2016
CHSM72M(BL)-HC-395	Mono	1000	48,98	20	10,17	395	IEC61215-1:2016 IEC61215-2:2016
CHSM72M(BL)-HC-400	Mono	1000	49,25	20	10,24	400	IEC61215-1:2016 IEC61215-2:2016
CHSM72M(BL)-HC-405	Mono	1000	49,53	20	10,31	405	IEC61215-1:2016 IEC61215-2:2016

Fecha de Emisión: 2019-12-12
 Fecha de Vencimiento: 2022-12-12
 Versión 7; 2021-12-16

Página 36 de 46



This document cancels and supersedes the last version of this certificate number issued by SGS Colombia S.A.S.

Any complaint, appeal or enquiry about the validity of this certificate/report may be sent to so.servicioalcliente@sgs.com, via phone No. 7422274 ext. 13602 and its validity can be checked at <https://www.sgs.com/en/certified-clients-and-products>

This document is issued by the Company under its General Conditions of Service accessible at <http://www.sgs.com/terms-and-conditions.html>. Attention is drawn to the limitation of liability, indemnification and jurisdiction issues defined therein.

Any holder of this document is advised that information contained herein reflects the Company's findings at the time of its intervention only and within the limits of Client's instructions, if any. The Company's sole responsibility is to its Client and this document does not exonerate parties to a transaction from exercising all their rights and obligations under the transaction documents. Any unauthorized alteration, forgery or falsification of the content or appearance of this document is unlawful and offenders may be prosecuted to the fullest extent of the law.

CRS-C-06-05 V.4 junio 2019





SGS COLOMBIA S.A.S.

CRS-F490101

ORDEN No. 4200-33938

CERTIFICADO No. CRS15121

ORDEN CERT. No. CO-CERT191201757-08

CERTIFICADO DE CONFORMIDAD DE PRODUCTO

Chint Solar (Zhejiang) Co., Ltd.

Building 1, No. 1355, Bin'an Road, Binjiang District, Hangzhou, 310052, Zhejiang, China

Referencia	Tipo	Tensión Máxima Del Sistema (V)	Tensión En Circuito Abierto (V)	Corriente Nominal (A)	Corriente De Cortocircuito (A)	Potencia Máxima Del Módulo (W)	Estándar De Ensayo
CHSM72M(BL)-HC-410	Mono	1000	49.8	20	10.38	410	IEC61215-1:2016 IEC61215-2:2016
CHSM72M(BL)-HC-415	Mono	1000	50.06	20	10.45	415	IEC61215-1:2016 IEC61215-2:2016
CHSM72M(BL)-HC-420	Mono	1000	50.32	20	10.52	420	IEC61215-1:2016 IEC61215-2:2016
CHSM72M(BL)-HC-425	Mono	1000	47.73	20	11.03	425	IEC61215-1:2016 IEC61215-2:2016
CHSM72M(BL)-HC-430	Mono	1000	47.99	20	11.1	430	IEC61215-1:2016 IEC61215-2:2016
CHSM72M(BL)-HC-435	Mono	1000	48.25	20	11.16	435	IEC61215-1:2016 IEC61215-2:2016
CHSM72M(BL)-HC-440	Mono	1000	48.5	20	11.24	440	IEC61215-1:2016 IEC61215-2:2016
CHSM72M(BL)-HC-445	Mono	1000	48.8	20	11.3	445	IEC61215-1:2016 IEC61215-2:2016
CHSM72M(BL)-HC-450	Mono	1000	49.05	20	11.37	450	IEC61215-1:2016 IEC61215-2:2016
CHSM72M(BL)-HC-455	Mono	1000	49.35	20	11.44	455	IEC61215-1:2016 IEC61215-2:2016
CHSM72M(BL)-HC-520	Mono	1000	48.9	25	13.34	520	IEC61215-1:2016 IEC61215-2:2016
CHSM72M(BL)-HC-525	Mono	1000	49.1	25	13.43	525	IEC61215-1:2016 IEC61215-2:2016
CHSM72M(BL)-HC-530	Mono	1000	49.3	25	13.52	530	IEC61215-1:2016 IEC61215-2:2016

Fecha de Emisión: 2019-12-12

Fecha de Vencimiento: 2022-12-12

Versión 7; 2021-12-16

Página 37 de 46



This document cancels and supersedes the last version of this certificate number issued by SGS Colombia S.A.S.

Any complaint, appeal or enquiry about the validity of this certificate/report may be sent to so.servicioalcliente@sgs.com, via phone No. 7422274 ext. 13602 and its validity can be checked at <https://www.sgs.com/en/certified-clients-and-products>

This document is issued by the Company under its General Conditions of Service accessible at <http://www.sgs.com/terms-and-conditions.html>. Attention is drawn to the limitation of liability, indemnification and jurisdiction issues defined therein.

Any holder of this document is advised that information contained herein reflects the Company's findings at the time of its intervention only and within the limits of Client's instructions, if any. The Company's sole responsibility is to its Client and this document does not exonerate parties to a transaction from exercising all their rights and obligations under the transaction documents. Any unauthorized alteration, forgery or falsification of the content or appearance of this document is unlawful and offenders may be prosecuted to the fullest extent of the law.

CRS-C-06-05 V.4 junio 2019





SGS COLOMBIA S.A.S.
CRS-F490101
ORDEN No. 4200-33938
CERTIFICADO No. CRS15121
ORDEN CERT. No. CO-CERT191201757-08
CERTIFICADO DE CONFORMIDAD DE PRODUCTO
Chint Solar (Zhejiang) Co., Ltd.
Building 1, No. 1355, Bin'an Road, Binjiang District, Hangzhou, 310052, Zhejiang, China

Referencia	Tipo	Tensión Máxima Del Sistema (V)	Tensión En Circuito Abierto (V)	Corriente Nominal (A)	Corriente De Cortocircuito (A)	Potencia Máxima Del Módulo (W)	Estándar De Ensayo
CHSM72M(BL)-HC-535	Mono	1000	49,5	25	13,61	535	IEC61215-1:2016 IEC61215-2:2016
CHSM72M(BL)-HC-540	Mono	1000	49,7	25	13,72	540	IEC61215-1:2016 IEC61215-2:2016
CHSM72M(BL)-HC-545	Mono	1000	49,9	25	13,81	545	IEC61215-1:2016 IEC61215-2:2016
CHSM60M(BL)-HC-275	Mono	1000	38,18	15	9,28	275	IEC61215-1:2016 IEC61215-2:2016
CHSM60M(BL)-HC-280	Mono	1000	38,5	15	9,36	280	IEC61215-1:2016 IEC61215-2:2016
CHSM60M(BL)-HC-285	Mono	1000	38,79	15	9,43	285	IEC61215-1:2016 IEC61215-2:2016
CHSM60M(BL)-HC-290	Mono	1000	39,09	15	9,51	290	IEC61215-1:2016 IEC61215-2:2016
CHSM60M(BL)-HC-295	Mono	1000	39,39	15	9,59	295	IEC61215-1:2016 IEC61215-2:2016
CHSM60M(BL)-HC-300	Mono	1000	39,75	20	9,64	300	IEC61215-1:2016 IEC61215-2:2016
CHSM60M(BL)-HC-305	Mono	1000	39,84	20	9,73	305	IEC61215-1:2016 IEC61215-2:2016
CHSM60M(BL)-HC-310	Mono	1000	40,11	20	9,82	310	IEC61215-1:2016 IEC61215-2:2016
CHSM60M(BL)-HC-315	Mono	1000	40,42	20	9,9	315	IEC61215-1:2016 IEC61215-2:2016
CHSM60M(BL)-HC-320	Mono	1000	40,72	20	9,98	320	IEC61215-1:2016 IEC61215-2:2016

Fecha de Emisión: 2019-12-12
 Fecha de Vencimiento: 2022-12-12
 Versión 7; 2021-12-16

Página 38 de 46



This document cancels and supersedes the last version of this certificate number issued by SGS Colombia S.A.S.

Any complaint, appeal or enquiry about the validity of this certificate/report may be sent to so.servicioalcliente@sgs.com, via phone No. 7422274 ext. 13602 and its validity can be checked at <https://www.sgs.com/en/certified-clients-and-products>

This document is issued by the Company under its General Conditions of Service accessible at <http://www.sgs.com/terms-and-conditions.html>. Attention is drawn to the limitation of liability, indemnification and jurisdiction issues defined therein.

Any holder of this document is advised that information contained herein reflects the Company's findings at the time of its intervention only and within the limits of Client's instructions, if any. The Company's sole responsibility is to its Client and this document does not exonerate parties to a transaction from exercising all their rights and obligations under the transaction documents. Any unauthorized alteration, forgery or falsification of the content or appearance of this document is unlawful and offenders may be prosecuted to the fullest extent of the law.

CRS-C-06-05 V.4 junio 2019





SGS COLOMBIA S.A.S.
CRS-F490101
ORDEN No. 4200-33938
CERTIFICADO No. CRS15121
ORDEN CERT. No. CO-CERT191201757-08
CERTIFICADO DE CONFORMIDAD DE PRODUCTO
Chint Solar (Zhejiang) Co., Ltd.
Building 1, No. 1355, Bin'an Road, Binjiang District, Hangzhou, 310052, Zhejiang, China

Referencia	Tipo	Tensión Máxima Del Sistema (V)	Tensión En Circuito Abierto (V)	Corriente Nominal (A)	Corriente De Cortocircuito (A)	Potencia Máxima Del Módulo (W)	Estándar De Ensayo
CHSM60M(BL)-HC-325	Mono	1000	41,03	20	10,06	325	IEC61215-1:2016 IEC61215-2:2016
CHSM60M(BL)-HC-330	Mono	1000	41,32	20	10,14	330	IEC61215-1:2016 IEC61215-2:2016
CHSM60M(BL)-HC-335	Mono	1000	41,61	20	10,22	335	IEC61215-1:2016 IEC61215-2:2016
CHSM60M(BL)-HC-340	Mono	1000	41,88	20	10,3	340	IEC61215-1:2016 IEC61215-2:2016
CHSM60M(BL)-HC-345	Mono	1000	42,16	20	10,38	345	IEC61215-1:2016 IEC61215-2:2016
CHSM60M(BL)-HC-350	Mono	1000	42,44	20	10,46	350	IEC61215-1:2016 IEC61215-2:2016
CHSM60M(BL)-HC-355	Mono	1000	39,798206	20	11,15	355	IEC61215-1:2016 IEC61215-2:2016
CHSM60M(BL)-HC-360	Mono	1000	40,14273	20	11,21	360	IEC61215-1:2016 IEC61215-2:2016
CHSM60M(BL)-HC-365	Mono	1000	40,411869	20	11,29	365	IEC61215-1:2016 IEC61215-2:2016
CHSM60M(BL)-HC-370	Mono	1000	40,75	20	11,35	370	IEC61215-1:2016 IEC61215-2:2016
CHSM60M(BL)-HC-375	Mono	1000	41,05	20	11,42	375	IEC61215-1:2016 IEC61215-2:2016
CHSM60M(BL)-HC-380	Mono	1000	41,34	20	11,49	380	IEC61215-1:2016 IEC61215-2:2016
CHSM60M(BL)-HC-435	Mono	1000	40,85	25	13,38	435	IEC61215-1:2016 IEC61215-2:2016

Fecha de Emisión: 2019-12-12
 Fecha de Vencimiento: 2022-12-12
 Versión 7; 2021-12-16

Página 39 de 46



This document cancels and supersedes the last version of this certificate number issued by SGS Colombia S.A.S.

Any complaint, appeal or enquiry about the validity of this certificate/report may be sent to so.servicioalcliente@sgs.com, via phone No. 7422274 ext. 13602 and its validity can be checked at <https://www.sgs.com/en/certified-clients-and-products>

This document is issued by the Company under its General Conditions of Service accessible at <http://www.sgs.com/terms-and-conditions.html>. Attention is drawn to the limitation of liability, indemnification and jurisdiction issues defined therein.

Any holder of this document is advised that information contained herein reflects the Company's findings at the time of its intervention only and within the limits of Client's instructions, if any. The Company's sole responsibility is to its Client and this document does not exonerate parties to a transaction from exercising all their rights and obligations under the transaction documents. Any unauthorized alteration, forgery or falsification of the content or appearance of this document is unlawful and offenders may be prosecuted to the fullest extent of the law.

CRS-C-06-05 V.4 junio 2019





SGS COLOMBIA S.A.S.
CRS-F490101
ORDEN No. 4200-33938
CERTIFICADO No. CRS15121
ORDEN CERT. No. CO-CERT191201757-08
CERTIFICADO DE CONFORMIDAD DE PRODUCTO
Chint Solar (Zhejiang) Co., Ltd.
Building 1, No. 1355, Bin'an Road, Binjiang District, Hangzhou, 310052, Zhejiang, China

Referencia	Tipo	Tensión Máxima Del Sistema (V)	Tensión En Circuito Abierto (V)	Corriente Nominal (A)	Corriente De Cortocircuito (A)	Potencia Máxima Del Módulo (W)	Estándar De Ensayo
CHSM60M(BL)-HC-440	Mono	1000	41,05	25	13,48	440	IEC61215-1:2016 IEC61215-2:2016
CHSM60M(BL)-HC-445	Mono	1000	41,25	25	13,59	445	IEC61215-1:2016 IEC61215-2:2016
CHSM60M(BL)-HC-450	Mono	1000	41,45	25	13,71	450	IEC61215-1:2016 IEC61215-2:2016
CHSM72M/LV-HC-330	Mono	1000	45,30	15	9,30	330	IEC61215-1:2016 IEC61215-2:2016
CHSM72M/LV-HC-335	Mono	1000	45,61	15	9,36	335	IEC61215-1:2016 IEC61215-2:2016
CHSM72M/LV-HC-340	Mono	1000	45,91	15	9,41	340	IEC61215-1:2016 IEC61215-2:2016
CHSM72M/LV-HC-345	Mono	1000	46,21	15	9,46	345	IEC61215-1:2016 IEC61215-2:2016
CHSM72M/LV-HC-350	Mono	1000	46,52	15	9,52	350	IEC61215-1:2016 IEC61215-2:2016
CHSM72M/LV-HC-355	Mono	1000	46,83	15	9,57	355	IEC61215-1:2016 IEC61215-2:2016
CHSM72M/LV-HC-360	Mono	1000	47,13	20	9,64	360	IEC61215-1:2016 IEC61215-2:2016
CHSM72M/LV-HC-365	Mono	1000	47,44	20	9,71	365	IEC61215-1:2016 IEC61215-2:2016
CHSM72M/LV-HC-370	Mono	1000	47,64	20	9,80	370	IEC61215-1:2016 IEC61215-2:2016
CHSM72M/LV-HC-375	Mono	1000	47,89	20	9,88	375	IEC61215-1:2016 IEC61215-2:2016

Fecha de Emisión: 2019-12-12
 Fecha de Vencimiento: 2022-12-12
 Versión 7; 2021-12-16

Página 40 de 46



This document cancels and supersedes the last version of this certificate number issued by SGS Colombia S.A.S.

Any complaint, appeal or enquiry about the validity of this certificate/report may be sent to so.servicioalcliente@sgs.com, via phone No. 7422274 ext. 13602 and its validity can be checked at <https://www.sgs.com/en/certified-clients-and-products>

This document is issued by the Company under its General Conditions of Service accessible at <http://www.sgs.com/terms-and-conditions.htm>. Attention is drawn to the limitation of liability, indemnification and jurisdiction issues defined therein.

Any holder of this document is advised that information contained herein reflects the Company's findings at the time of its intervention only and within the limits of Client's instructions, if any. The Company's sole responsibility is to its Client and this document does not exonerate parties to a transaction from exercising all their rights and obligations under the transaction documents. Any unauthorized alteration, forgery or falsification of the content or appearance of this document is unlawful and offenders may be prosecuted to the fullest extent of the law.





SGS COLOMBIA S.A.S.
CRS-F490101
ORDEN No. 4200-33938
CERTIFICADO No. CRS15121
ORDEN CERT. No. CO-CERT191201757-08
CERTIFICADO DE CONFORMIDAD DE PRODUCTO
Chint Solar (Zhejiang) Co., Ltd.
Building 1, No. 1355, Bin'an Road, Binjiang District, Hangzhou, 310052, Zhejiang, China

Referencia	Tipo	Tensión Máxima Del Sistema (V)	Tensión En Circuito Abierto (V)	Corriente Nominal (A)	Corriente De Cortocircuito (A)	Potencia Máxima Del Módulo (W)	Estándar De Ensayo
CHSM72M/LV-HC-380	Mono	1000	48.18	20	9.95	380	IEC61215-1:2016 IEC61215-2:2016
CHSM72M/LV-HC-385	Mono	1000	48.47	20	10.02	385	IEC61215-1:2016 IEC61215-2:2016
CHSM72M/LV-HC-390	Mono	1000	48.70	20	10.10	390	IEC61215-1:2016 IEC61215-2:2016
CHSM72M/LV-HC-395	Mono	1000	48.98	20	10.17	395	IEC61215-1:2016 IEC61215-2:2016
CHSM72M/LV-HC-400	Mono	1000	49.25	20	10.24	400	IEC61215-1:2016 IEC61215-2:2016
CHSM72M/LV-HC-405	Mono	1000	49.53	20	10.31	405	IEC61215-1:2016 IEC61215-2:2016
CHSM72M/LV-HC-410	Mono	1000	49.80	20	10.38	410	IEC61215-1:2016 IEC61215-2:2016
CHSM72M/LV-HC-415	Mono	1000	50.06	20	10.45	415	IEC61215-1:2016 IEC61215-2:2016
CHSM72M/LV-HC-420	Mono	1000	50.32	20	10.52	420	IEC61215-1:2016 IEC61215-2:2016
CHSM72M/LV-HC-425	Mono	1000	47.73	20	11.03	425	IEC61215-1:2016 IEC61215-2:2016
CHSM72M/LV-HC-430	Mono	1000	47.99	20	11.10	430	IEC61215-1:2016 IEC61215-2:2016
CHSM72M/LV-HC-435	Mono	1000	48.25	20	11.16	435	IEC61215-1:2016 IEC61215-2:2016
CHSM72M/LV-HC-440	Mono	1000	48.50	20	11.24	440	IEC61215-1:2016 IEC61215-2:2016

Fecha de Emisión: 2019-12-12
 Fecha de Vencimiento: 2022-12-12
 Versión 7; 2021-12-16

Página 41 de 46



This document cancels and supersedes the last version of this certificate number issued by SGS Colombia S.A.S.

Any complaint, appeal or enquiry about the validity of this certificate/report may be sent to so.servicioalcliente@sgs.com, via phone No. 7422274 ext. 13602 and its validity can be checked at <https://www.sgs.com/en/certified-clients-and-products>

This document is issued by the Company under its General Conditions of Service accessible at <http://www.sgs.com/terms-and-conditions.html>. Attention is drawn to the limitation of liability, indemnification and jurisdiction issues defined therein.

Any holder of this document is advised that information contained herein reflects the Company's findings at the time of its intervention only and within the limits of Client's instructions, if any. The Company's sole responsibility is to its Client and this document does not exonerate parties to a transaction from exercising all their rights and obligations under the transaction documents. Any unauthorized alteration, forgery or falsification of the content or appearance of this document is unlawful and offenders may be prosecuted to the fullest extent of the law.

CRS-C-06-05 V.4 junio 2019





SGS COLOMBIA S.A.S.
CRS-F490101
ORDEN No. 4200-33938
CERTIFICADO No. CRS15121
ORDEN CERT. No. CO-CERT191201757-08
CERTIFICADO DE CONFORMIDAD DE PRODUCTO
Chint Solar (Zhejiang) Co., Ltd.
Building 1, No. 1355, Bin'an Road, Binjiang District, Hangzhou, 310052, Zhejiang, China

Referencia	Tipo	Tensión Máxima Del Sistema (V)	Tensión En Circuito Abierto (V)	Corriente Nominal (A)	Corriente De Cortocircuito (A)	Potencia Máxima Del Módulo (W)	Estándar De Ensayo
CHSM72M/LV-HC-445	Mono	1000	48.80	20	11.30	445	IEC61215-1:2016 IEC61215-2:2016
CHSM72M/LV-HC-450	Mono	1000	49.05	20	11.37	450	IEC61215-1:2016 IEC61215-2:2016
CHSM72M/LV-HC-455	Mono	1000	49.35	20	11.44	455	IEC61215-1:2016 IEC61215-2:2016
CHSM72M/LV-HC-520	Mono	1000	48.9	25	13.34	520	IEC61215-1:2016 IEC61215-2:2016
CHSM72M/LV-HC-525	Mono	1000	49.1	25	13.43	525	IEC61215-1:2016 IEC61215-2:2016
CHSM72M/LV-HC-530	Mono	1000	49.3	25	13.52	530	IEC61215-1:2016 IEC61215-2:2016
CHSM72M/LV-HC-535	Mono	1000	49.5	25	13.61	535	IEC61215-1:2016 IEC61215-2:2016
CHSM72M/LV-HC-540	Mono	1000	49.7	25	13.72	540	IEC61215-1:2016 IEC61215-2:2016
CHSM72M/LV-HC-545	Mono	1000	49.9	25	13.81	545	IEC61215-1:2016 IEC61215-2:2016
CHSM72M/LV-HC-550	Mono	1000	50.1	25	13.9	550	IEC61215-1:2016 IEC61215-2:2016
CHSM60M/LV-HC-275	Mono	1000	38.18	15	9.28	275	IEC61215-1:2016 IEC61215-2:2016
CHSM60M/LV-HC-280	Mono	1000	38.50	15	9.36	280	IEC61215-1:2016 IEC61215-2:2016
CHSM60M/LV-HC-285	Mono	1000	38.79	15	9.43	285	IEC61215-1:2016 IEC61215-2:2016

Fecha de Emisión: 2019-12-12
 Fecha de Vencimiento: 2022-12-12
 Versión 7; 2021-12-16

Página 42 de 46



This document cancels and supersedes the last version of this certificate number issued by SGS Colombia S.A.S.

Any complaint, appeal or enquiry about the validity of this certificate/report may be sent to so.servicioalcliente@sgs.com, via phone No. 7422274 ext. 13602 and its validity can be checked at <https://www.sgs.com/en/certified-clients-and-products>

This document is issued by the Company under its General Conditions of Service accessible at <http://www.sgs.com/terms-and-conditions.html>. Attention is drawn to the limitation of liability, indemnification and jurisdiction issues defined therein.

Any holder of this document is advised that information contained herein reflects the Company's findings at the time of its intervention only and within the limits of Client's instructions, if any. The Company's sole responsibility is to its Client and this document does not exonerate parties to a transaction from exercising all their rights and obligations under the transaction documents. Any unauthorized alteration, forgery or falsification of the content or appearance of this document is unlawful and offenders may be prosecuted to the fullest extent of the law.

CRS-C-06-05 V.4 junio 2019





SGS COLOMBIA S.A.S.
CRS-F490101
ORDEN No. 4200-33938
CERTIFICADO No. CRS15121
ORDEN CERT. No. CO-CERT191201757-08
CERTIFICADO DE CONFORMIDAD DE PRODUCTO
Chint Solar (Zhejiang) Co., Ltd.
Building 1, No. 1355, Bin'an Road, Binjiang District, Hangzhou, 310052, Zhejiang, China

Referencia	Tipo	Tensión Máxima Del Sistema (V)	Tensión En Circuito Abierto (V)	Corriente Nominal (A)	Corriente De Cortocircuito (A)	Potencia Máxima Del Módulo (W)	Estándar De Ensayo
CHSM60M/LV-HC-290	Mono	1000	39.09	15	9.51	290	IEC61215-1:2016 IEC61215-2:2016
CHSM60M/LV-HC-295	Mono	1000	39.39	15	9.59	295	IEC61215-1:2016 IEC61215-2:2016
CHSM60M/LV-HC-300	Mono	1000	39.75	20	9.64	300	IEC61215-1:2016 IEC61215-2:2016
CHSM60M/LV-HC-305	Mono	1000	39.84	20	9.73	305	IEC61215-1:2016 IEC61215-2:2016
CHSM60M/LV-HC-310	Mono	1000	40.11	20	9.82	310	IEC61215-1:2016 IEC61215-2:2016
CHSM60M/LV-HC-315	Mono	1000	40.42	20	9.90	315	IEC61215-1:2016 IEC61215-2:2016
CHSM60M/LV-HC-320	Mono	1000	40.72	20	9.98	320	IEC61215-1:2016 IEC61215-2:2016
CHSM60M/LV-HC-325	Mono	1000	41.03	20	10.06	325	IEC61215-1:2016 IEC61215-2:2016
CHSM60M/LV-HC-330	Mono	1000	41.32	20	10.14	330	IEC61215-1:2016 IEC61215-2:2016
CHSM60M/LV-HC-335	Mono	1000	41.61	20	10.22	335	IEC61215-1:2016 IEC61215-2:2016
CHSM60M/LV-HC-340	Mono	1000	41.88	20	10.30	340	IEC61215-1:2016 IEC61215-2:2016
CHSM60M/LV-HC-345	Mono	1000	42.16	20	10.38	345	IEC61215-1:2016 IEC61215-2:2016
CHSM60M/LV-HC-350	Mono	1000	42.44	20	10.46	350	IEC61215-1:2016 IEC61215-2:2016

Fecha de Emisión: 2019-12-12
 Fecha de Vencimiento: 2022-12-12
 Versión 7; 2021-12-16

Página 43 de 46



This document cancels and supersedes the last version of this certificate number issued by SGS Colombia S.A.S.

Any complaint, appeal or enquiry about the validity of this certificate/report may be sent to so.servicioalcliente@sgs.com, via phone No. 7422274 ext. 13602 and its validity can be checked at <https://www.sgs.com/en/certified-clients-and-products>

This document is issued by the Company under its General Conditions of Service accessible at <http://www.sgs.com/terms-and-conditions.html>. Attention is drawn to the limitation of liability, indemnification and jurisdiction issues defined therein.

Any holder of this document is advised that information contained herein reflects the Company's findings at the time of its intervention only and within the limits of Client's instructions, if any. The Company's sole responsibility is to its Client and this document does not exonerate parties to a transaction from exercising all their rights and obligations under the transaction documents. Any unauthorized alteration, forgery or falsification of the content or appearance of this document is unlawful and offenders may be prosecuted to the fullest extent of the law.





SGS COLOMBIA S.A.S.
CRS-F490101
ORDEN No. 4200-33938
CERTIFICADO No. CRS15121
ORDEN CERT. No. CO-CERT191201757-08
CERTIFICADO DE CONFORMIDAD DE PRODUCTO
Chint Solar (Zhejiang) Co., Ltd.
Building 1, No. 1355, Bin'an Road, Binjiang District, Hangzhou, 310052, Zhejiang, China

Referencia	Tipo	Tensión Máxima Del Sistema (V)	Tensión En Circuito Abierto (V)	Corriente Nominal (A)	Corriente De Cortocircuito (A)	Potencia Máxima Del Módulo (W)	Estándar De Ensayo
CHSM60M/LV-HC-355	Mono	1000	39.80	20	11.15	355	IEC61215-1:2016 IEC61215-2:2016
CHSM60M/LV-HC-360	Mono	1000	40.14	20	11.21	360	IEC61215-1:2016 IEC61215-2:2016
CHSM60M/LV-HC-365	Mono	1000	40.41	20	11.29	365	IEC61215-1:2016 IEC61215-2:2016
CHSM60M/LV-HC-370	Mono	1000	40.75	20	11.35	370	IEC61215-1:2016 IEC61215-2:2016
CHSM60M/LV-HC-375	Mono	1000	41.05	20	11.42	375	IEC61215-1:2016 IEC61215-2:2016
CHSM60M/LV-HC-380	Mono	1000	41.34	20	11.49	380	IEC61215-1:2016 IEC61215-2:2016
CHSM60M/LV-HC-590	Mono	1000	41.1	30	18.42	590	IEC61215-1:2016 IEC61215-2:2016
CHSM60M/LV-HC-595	Mono	1000	41.3	30	18.47	595	IEC61215-1:2016 IEC61215-2:2016
CHSM60M/LV-HC-600	Mono	1000	41.5	30	18.52	600	IEC61215-1:2016 IEC61215-2:2016
CHSM60M/LV-HC-605	Mono	1000	41.7	30	18.57	605	IEC61215-1:2016 IEC61215-2:2016
CHSM60M/LV-HC-610	Mono	1000	41.9	30	18.62	610	IEC61215-1:2016 IEC61215-2:2016
CHSM66M/LV-HC-395	Mono	1000	43.95	20	11.21	395	IEC61215-1:2016 IEC61215-2:2016
CHSM66M/LV-HC-400	Mono	1000	44.27	20	11.27	400	IEC61215-1:2016 IEC61215-2:2016

Fecha de Emisión: 2019-12-12
 Fecha de Vencimiento: 2022-12-12
 Versión 7; 2021-12-16

Página 44 de 46



This document cancels and supersedes the last version of this certificate number issued by SGS Colombia S.A.S.

Any complaint, appeal or enquiry about the validity of this certificate/report may be sent to so.servicioalcliente@sgs.com, via phone No. 7422274 ext. 13602 and its validity can be checked at <https://www.sgs.com/en/certified-clients-and-products>

This document is issued by the Company under its General Conditions of Service accessible at <http://www.sgs.com/terms-and-conditions.html>. Attention is drawn to the limitation of liability, indemnification and jurisdiction issues defined therein.

Any holder of this document is advised that information contained herein reflects the Company's findings at the time of its intervention only and within the limits of Client's instructions, if any. The Company's sole responsibility is to its Client and this document does not exonerate parties to a transaction from exercising all their rights and obligations under the transaction documents. Any unauthorized alteration, forgery or falsification of the content or appearance of this document is unlawful and offenders may be prosecuted to the fullest extent of the law.

CRS-C-06-05 V.4 junio 2019





SGS COLOMBIA S.A.S.
CRS-F490101
ORDEN No. 4200-33938
CERTIFICADO No. CRS15121
ORDEN CERT. No. CO-CERT191201757-08
CERTIFICADO DE CONFORMIDAD DE PRODUCTO
Chint Solar (Zhejiang) Co., Ltd.
Building 1, No. 1355, Bin'an Road, Binjiang District, Hangzhou, 310052, Zhejiang, China

Referencia	Tipo	Tensión Máxima Del Sistema (V)	Tensión En Circuito Abierto (V)	Corriente Nominal (A)	Corriente De Cortocircuito (A)	Potencia Máxima Del Módulo (W)	Estándar De Ensayo
CHSM66M/LV-HC-405	Mono	1000	44,58	20	11,34	405	IEC61215-1:2016 IEC61215-2:2016
CHSM66M/LV-HC-410	Mono	1000	44,89	20	11,41	410	IEC61215-1:2016 IEC61215-2:2016
CHSM66M/LV-HC-415	Mono	1000	45,18	20	11,49	415	IEC61215-1:2016 IEC61215-2:2016
CHSM66M/LV-HC-480	Mono	1000	44,98	25	13,41	480	IEC61215-1:2016 IEC61215-2:2016
CHSM66M/LV-HC-485	Mono	1000	45,18	25	13,5	485	IEC61215-1:2016 IEC61215-2:2016
CHSM66M/LV-HC-490	Mono	1000	45,38	25	13,6	490	IEC61215-1:2016 IEC61215-2:2016
CHSM66M/LV-HC-495	Mono	1000	45,58	25	13,71	495	IEC61215-1:2016 IEC61215-2:2016
CHSM66M/LV-HC-500	Mono	1000	45,78	25	13,81	500	IEC61215-1:2016 IEC61215-2:2016
CHSM66M/LV-HC-645	Mono	1000	45,08	30	18,38	645	IEC61215-1:2016 IEC61215-2:2016
CHSM66M/LV-HC-650	Mono	1000	45,28	30	18,43	650	IEC61215-1:2016 IEC61215-2:2016
CHSM66M/LV-HC-655	Mono	1000	45,48	30	18,48	655	IEC61215-1:2016 IEC61215-2:2016
CHSM66M/LV-HC-660	Mono	1000	45,68	30	18,53	660	IEC61215-1:2016 IEC61215-2:2016
CHSM66M/LV-HC-665	Mono	1000	45,88	30	18,58	665	IEC61215-1:2016 IEC61215-2:2016

Fecha de Emisión: 2019-12-12
 Fecha de Vencimiento: 2022-12-12
 Versión 7; 2021-12-16

Página 45 de 46



This document cancels and supersedes the last version of this certificate number issued by SGS Colombia S.A.S.

Any complaint, appeal or enquiry about the validity of this certificate/report may be sent to so.servicioalcliente@sgs.com, via phone No. 7422274 ext. 13602 and its validity can be checked at <https://www.sgs.com/en/certified-clients-and-products>

This document is issued by the Company under its General Conditions of Service accessible at <http://www.sgs.com/terms-and-conditions.html>. Attention is drawn to the limitation of liability, indemnification and jurisdiction issues defined therein.

Any holder of this document is advised that information contained herein reflects the Company's findings at the time of its intervention only and within the limits of Client's instructions, if any. The Company's sole responsibility is to its Client and this document does not exonerate parties to a transaction from exercising all their rights and obligations under the transaction documents. Any unauthorized alteration, forgery or falsification of the content or appearance of this document is unlawful and offenders may be prosecuted to the fullest extent of the law.

CRS-C-06-05 V.4 junio 2019





SGS COLOMBIA S.A.S.
CRS-F490101
ORDEN No. 4200-33938
CERTIFICADO No. CRS15121
ORDEN CERT. No. CO-CERT191201757-08
CERTIFICADO DE CONFORMIDAD DE PRODUCTO
Chint Solar (Zhejiang) Co., Ltd.
Building 1, No. 1355, Bin'an Road, Binjiang District, Hangzhou, 310052, Zhejiang, China

Referencia	Tipo	Tensión Máxima Del Sistema (V)	Tensión En Circuito Abierto (V)	Corriente Nominal (A)	Corriente De Cortocircuito (A)	Potencia Máxima Del Módulo (W)	Estándar De Ensayo
CHSM66M/LV-HC-670	Mono	1000	46.08	30	18.63	670	IEC61215-1:2016 IEC61215-2:2016
CHSM66M/LV-HC-675	Mono	1000	46.28	30	18.68	675	IEC61215-1:2016 IEC61215-2:2016
CHSM54M/LV-HC-390	Mono	1000	36.6	25	13,403444	390	IEC61215-1:2016 IEC61215-2:2017
CHSM54M/LV-HC-395	Mono	1000	36.8	25	13,518508	395	IEC61215-1:2016 IEC61215-2:2018
CHSM54M/LV-HC-400	Mono	1000	37	25	13,650014	400	IEC61215-1:2016 IEC61215-2:2019
CHSM54M/LV-HC-405	Mono	1000	37.2	25	13,763713	405	IEC61215-1:2016 IEC61215-2:2020
CHSM54M/LV-HC-410	Mono	1000	37.4	25	13,876667	410	IEC61215-1:2016 IEC61215-2:2021
CHSM54M(BL)-HC-390	Mono	1000	36.6	25	13,403444	390	IEC61215-1:2016 IEC61215-2:2022
CHSM54M(BL)-HC-395	Mono	1000	36.8	25	13,518508	395	IEC61215-1:2016 IEC61215-2:2023
CHSM54M(BL)-HC-400	Mono	1000	37	25	13,650014	400	IEC61215-1:2016 IEC61215-2:2024
CHSM54M(BL)-HC-405	Mono	1000	37.2	25	13,763713	405	IEC61215-1:2016 IEC61215-2:2025

*****FIN DEL DOCUMENTO*****

Fecha de Emisión: 2019-12-12
 Fecha de Vencimiento: 2022-12-12
 Versión 7; 2021-12-16

Página 46 de 46



This document cancels and supersedes the last version of this certificate number issued by SGS Colombia S.A.S.

Any complaint, appeal or enquiry about the validity of this certificate/report may be sent to so.servicioalcliente@sgs.com, via phone No. 7422274 ext. 13602 and its validity can be checked at <https://www.sgs.com/en/certified-clients-and-products>

This document is issued by the Company under its General Conditions of Service accessible at <http://www.sgs.com/terms-and-conditions.html>. Attention is drawn to the limitation of liability, indemnification and jurisdiction issues defined therein.

Any holder of this document is advised that information contained herein reflects the Company's findings at the time of its intervention only and within the limits of Client's instructions, if any. The Company's sole responsibility is to its Client and this document does not exonerate parties to a transaction from exercising all their rights and obligations under the transaction documents. Any unauthorized alteration, forgery or falsification of the content or appearance of this document is unlawful and offenders may be prosecuted to the fullest extent of the law.

CRS-C-06-05 V.4 junio 2019

